

WEATHER

	Min.	Max.	Precip.
Thursday, July 8	61	83	0.06
Friday, July 9	52	81	0.01
Saturday, July 10	58	94	0.06
Sunday, July 11	59	92	0.04
Monday, July 12	57	89	0.09
Tuesday, July 13	48	76	0.40
Wednesday, July 14	48	79	0.02

ONE HUNDRED-SEVENTH YEAR—No. 5

12 Pages This Week

CHELSEA, MICHIGAN, THURSDAY, JULY 15, 1976

15c per copy

SUBSCRIPTION: \$6.00 PER YEAR

The Chelsea Standard

QUOTE

"Liberty means responsibility. That is why most men dread it."
—George Bernard Shaw.

Bicentennial Pageant Cast Meets Monday

Plans are now being made to cast the Chelsea Bicentennial Pageant, "America '76." The spectacular will present the living story of the growth and development of the United States and just how Washtenaw county and Chelsea figured in its growth and development. The cast for this living spectacular will number more than 300. Entire families are invited to participate, thus avoiding the need for babysitters.

The cast has no lines to learn. All dialogue and description is

handled by local narrators reading from the script, which has been written especially from Chelsea historical facts.

Rehearsals promise to be short and interesting, fine dance routines will be used, including Indian Ritual, Old Fashioned Hoe Down, Civil War Waltz, the Charleston, and the teen-age production number, the Telephone Hour.

All organizations, clubs, or individuals interested in participating are asked to meet on Monday, July 20, at 8 p.m. at the high school auditorium.

Sidewalk Sale, Art Fair Set For Aug. 13-14

What could be more fun than starting our Chelsea Bicentennial with an old fashion Sidewalk Day. Friday, Aug. 13 is the day, and look for bargains galore starting at 8:30 a.m.

If you tire of looking for good buys, you may entertain yourself with more artistic browsing, as the Art Fair will be here again, and as you all know we have terrific craftsmen in this area. You may even add to the festivities by shopping in your bicentennial costumes, especially for the promenade from 6 p.m. until closing at 8:30 p.m.

Now don't think that is it! Saturday morning you may treat yourself to a sausage and pancake breakfast served by the Masonic Lodge starting at 7:30 a.m. and of course you want to be present when we raise "Old Glory" for the official opening of (Continued on page four)



"HELLO DOLLY" opens tonight at 8 p.m. at Chelsea High school auditorium with this all-star cast in the entertainment spotlight. After weeks of rehearsals and set construction the time has come when you may hear the performers whispering "break a leg" to one another. Waving hello in their best "Hello Dolly" fashion are first row,

left to right, Joan Yocum (Minnie Fay), Pat Knickerbocker (Dolly), Bill Coelius (Horace Vandergelder), and Chris Alber (Mrs. Molloy). Towering behind them are, left to right, Howard Calyer (Barnaby) and Jeff Daniels (Cornelius). Performances will be July 15, 16 and 17.

'Hello Dolly' Opens Tonight on Stage at Chelsea High School

One of the most successful musicals in stage history, "Hello Dolly!" opens tonight in Chelsea High School Auditorium with performances on Friday and Saturday night also.

The show that helped elect a president when its title song was amended to "Hello Lyndon," in the first year of its run, continued to draw thronging audiences on Broadway for more than five years. After that, and to the delight of the theatregoers from London to Tokyo and Melbourne, it became one of the long-run record-holders of all time.

Based by Michael Stewart on Thornton Wilder's straight farce, "The Matchmaker," with rousing songs by Jerry Herman, "Hello Dolly!" will have Pat Knickerbocker (Dolly) in its central role of the nosey, pushing, meddling, effervescent marriage-broker with a de-

termination to match her most eligible client to herself.

Bill Coelius (Vandergelder) will play the role of Horace Vandergelder, her bawdy customer, a hay, grain, and feed merchant in 1890's. The time is the 1890's; when a hay and feed store was the equivalent of a service station. A grouchy fellow who tyrannizes his clerks, Vandergelder has one undeniable virtue in Dolly's eyes, he is "half-a-millionaire."

Complications in Dolly's designs arise when Vandergelder's two ground-down clerks, wearied of their seven-days-a-week job, fight out for a fling in New York on the day their boss has gone there to march in the 14th Street Parade and be introduced to Mrs. Molloy, a milliner.

They all keep running into each other and this requires the truant clerks to hide in closets, to take two ladies to eat in the city's most expensive restaurant on a nearly

empty wallet, and finally to be arrested and brought to face charges of one sort or another.

It is in the famous restaurant scene that the waiters welcome back their long-absent friend. They shake the rafters by singing "Hello Dolly!" to her, as she descends the staircase in splendor and elegance.

In addition to Miss Knickerbocker and Coelius, the large cast features Chris Alber as Widow Molloy; Jeff Daniels as Cornelius and Howard Calyer as Barnaby, the two clerks who find themselves even though they lose their jobs; Joan Yocum as Minnie Fay; Rob Wenk as Ambrose Kemper who is in love with Horace's niece, Emmergarde, played by Jodi Daniels.

Seats are still available and may be purchased at the door. DiAnn L'Roy, director of the production, comments: "This is a play for the whole family. So come see 'Dolly' on July 15, 16, and 17. You will enjoy it."

Sheriff, Deputies in Brawl at Fairgrounds

A brawl, involving Washtenaw County Sheriff Frederick J. Postill, his jail administrator Frank M. Donley, and one of Postill's deputies, Basil O. Baysinger, erupted at a wedding reception Sunday morning at the Chelsea Fairgrounds.

Speculation from witnesses place the cause of the fracas on an on-going feud between Postill and his deputy over accusations by Postill and Donley that Baysinger is supporting Thomas Minick and Charles Broderick for sheriff against a Postill re-election in the upcoming race. Postill denies there were political overtones to the fight.

As a result of the fight, Baysinger, a sheriff's deputy since 1968 and currently assigned to Circuit Court duties, has been suspended indefinitely; Postill required 14 stitches to close the cuts he received in the brawl; Donley is recovering from injuries being kicked, punched, and pushed down a flight of stairs; and Baysinger's wife, Shirley, has filed charges with Michigan State Police accusing Postill of assault.

According to the Chelsea Police Department, they received a dispatch about 1:20 a.m. Sunday from the Washtenaw County Sheriff's Department to investigate a reported fight underway at the wedding of Sheriff's Lt. Leonard A. Dexter, of the department's traffic safety division. The officers arrived, managed to quell the disturbance, and made no arrests.

From there the facts become muddled. Interviews with witnesses and with those involved in the brawl have surfaced to reveal many versions of what actually happened. Everyone agrees the fighting began outside the fairgrounds hall, in the parking lot. Only four people were pre-

sent there at the time, Postill, Donley, and Mr. and Mrs. Baysinger.

Baysinger says Postill and Donley were swearing at him and using obscenities in what began as a verbal confrontation. Baysinger claims he took his wife, Shirley, by the arm, telling her, "we'd better leave, all they want to do is fight." He added they started walking away, "when Postill and Donley both jumped me," Baysinger said he shouted at his wife to call State Police, and when she attempted to leave, Postill grabbed her around the neck and threw her against a parked car.

The fight was broken up by other guests and the Baysingers returned to the reception. Inside, more fighting erupted, at which point Chelsea police arrived.

Bicentennial Soap Box Derby Planned

Following along in the footsteps of the "Tricycle 500," are plans now underway to hold a two-block bicentennial soap box derby. The competition will pit Brothers of the Brigade, Smoothies, and Little Shavers against one another.

Get your tools and plans together as contest restrictions prohibit only three things, no engines, foot power, or hand power. All racing vehicles must be able to fit on a snowmobile trailer.

The derby will be held on a Saturday or Sunday afternoon. If any other group would like to co-ordinate with the aforementioned groups for post-race festivities, contact the Basement Savers' Ray Sabo for further information.

Baysinger claims Postill threatened to "go for his gun" until a Chelsea officer ordered him not to draw the weapon. Chelsea police state Postill did not touch his gun in their presence. Other reports insinuate a Chelsea officer had his gun drawn. However, Chelsea Patrolman Dettling, one of those called to the scene, emphatically denied that any guns were ever touched, "we didn't even loosen the safety strap."

As of early this week, Baysinger's attorney, Jack J. Garris, said he plans to file a civil suit against Postill and to seek criminal action against the sheriff through Attorney General Frank J. Kelley.

The Baysingers' charges against Postill are being investigated by State Police Detective Sgt. Robert L. Piziali of the Jackson post. His findings will be forwarded to Washtenaw County Prosecutor William F. Delhey.

Piziali is being aided by Chelsea Police Chief George Meranuck. Meranuck has advised his role is nominal, "as we would like to leave the investigation in the hands of a neutral party." Members of both the Sheriff's Department and Chelsea Police Department were guests at the wedding. Meranuck stated his side of the investigation will be conducted for the most part by Prosecutor's Investigator Duane Bauer, a former Ann Arbor Police Department detective sergeant.

Currently delaying the case is the fact that key witnesses, Lt. Dexter and his wife, on a wedding trip to Hawaii, will not be able to be contacted for at least one week. Another guest who witnessed portions of the brawl, the bridegroom's best man, has returned to his home in Wisconsin.

Bridges Chevrolet Dealership Moves into New, Larger Facility

The new Lloyd Bridges Chevrolet and Traveland dealership showroom on S. Main was the scene of ribbon-cutting ceremonies Saturday, July 10, 1 p.m., with more than 50 people on hand to celebrate the occasion. The dealership is owned and operated by Lloyd and Barbara Bridges of Lakeshore Dr.

Bridges initiated the celebration with a ribbon cutting ceremony promptly at 1 p.m., followed by the donation of a \$1,000 check to the Retinitis and Pigmentosis Foundation of Harvard. The contribution was made to this particular organization, Bridges stated, "partially because both the senior Mr. Bridges and I were born with this rare eye disease." Champagne was served to all in attendance.

Bridges purchased the dealership from Roland Spaulding in June of 1972. Harold Spaulding opened the family business in 1929 with offices at 405 N. Main. This will mark its first relocation.

Lloyd Bridges Chevrolet will sell and service motor homes and recreational vehicles. Lloyd Bridges Traveland is recognized as the number one Travco Motor Home dealer in the United States, and Travco is the country's leading luxury motor home model, first manufactured 20 years ago. However, all makes of recreational vehicles will receive the same expert service should they need it.

The new facility is located on four acres of ground and according to Bridges, one of its outstanding features will be "Washtenaw county's finest used car depot, the 'O.K. Corral,' complete with a surrounding wooden fence. The 1976 forecast

of total sales for both businesses has been set at \$8 million.

Bridges, who has been an automotive dealer for 15 years, first beginning in the Walled Lake area, attributes the past four successful years of operation "to the people in our company." Fred Klink, a lifetime resident of Chelsea and associated with Spaulding and Lloyd Bridges for 22 years now, is recognized as fifth in the state of Michigan in the sales of new Chevrolet cars and trucks; management team head Bill Anderson of Portage Lake has been in the auto business for 12 years; Don Inman, supervising the service department, has 15 years experience servicing GM products; Bud Vinyard of the parts department has had 14 years experience in auto parts dealings; and Alex Santiago, graduate of the University of the Philippines, with a master's degree in accounting, has been with the office staff of the firm for four years.

Lloyd Bridges Chevrolet and Traveland has a total of 30 employees. Of the newly constructed facility, Bridges stated, "The entire staff is here to sell and service autos and recreational vehicles, including my son, Jerry, a senior at Chelsea High, who will work part-time as a service technician in the recreational vehicle department. The new dealership has been developed to house the most modern and best equipped parts and service department available, to serve the transportation needs of the people in the Chelsea area."

The reputation of Lloyd Bridges Traveland has spread throughout the country, to the extent that people have come to Chelsea from all over the United States to purchase Travco vehicles, Bridges revealed. Located just north of the I-94 overpass on Main St., Lloyd Bridges Chevrolet and Traveland offers convenient business hours. Sales hours are Monday through Saturday, 8-6; Monday and Thursday evenings until 9. Parts and service hours are Monday through Friday, 7:30-5:30, and the parts department alone is open Saturday morning, 8-1.

to Chelsea from all over the United States to purchase Travco vehicles, Bridges revealed.

Located just north of the I-94 overpass on Main St., Lloyd Bridges Chevrolet and Traveland offers convenient business hours. Sales hours are Monday through Saturday, 8-6; Monday and Thursday evenings until 9. Parts and service hours are Monday through Friday, 7:30-5:30, and the parts department alone is open Saturday morning, 8-1.

School Board Seeks 1½ Mills In August Vote

Wednesday night, the Chelsea Board of Education met in a special meeting to finalize the proposed budget for the school year 1976-77 and to set a millage request of 1½ mills for one year. At Monday's regular meeting the board authorized an election to be held on the earliest possible date in August.

On March 22 a successful election was held renewing for five years the 24.72 operational mills that had been in effect since 1974. Howard Haselschwardt, board president, stated that the Chelsea board had expected the renewal millage to provide sufficient funds to operate the schools for the coming year. The state legislature had guaranteed a 6 percent increase in funding over last year's budgeted income, he said, but when they passed the final State Aid act, they not only didn't provide the schools with the 6 percent, they also failed to reinstate \$62,000 in cuts the Governor had made during the past school year.

President Haselschwardt explained that this loss of \$62,000 in state funds, "is a double blow to our finances. The loss in the 1975-76 school year forced us to end up on June 30 with a \$51,000 deficit instead of a surplus as we had expected. Also, since this coming year's income is based on last year's income, we lose a like amount of money from our expected receipts in 1976-77."

When asked how much recently completed buildings were contributing to the need for additional mill-

age, Superintendent Charles Cameron commented that the school district is receiving federal CETA funds that provide five additional personnel at no cost to the District, which has helped tremendously to ease the additional financial burden of the new facilities. Cameron emphasized that the increase in electric and heating fuel rates this past year had pushed up the cost of these two budget items alone a total of \$60,000, a staggering figure, but one which every homeowner understands.

Several board members emphasized that the entire school staff had co-operated this past year in holding down costs to an absolute minimum, and that every possible effort had been made to avoid another millage request, but that with the pressure of rising costs and the failure of the state to provide adequate school funding, the board had no alternative but to ask for the additional 1½ mills. They added that the purchase of new school buses has been deferred for a year, budget items such as textbooks, teaching supplies, athletic equipment have been frozen at present levels and in many cases reduced.

President Haselschwardt concluded Wednesday's meeting by expressing confidence that voters in the Chelsea School District realize the amount of effort that has gone into keeping the tax levels in this district at a minimum and that they would support the board and the schools in the August election.

Valuable Prizes in First Lady Contest

Have you ever been to Alabama? If you haven't, the Chelsea Bicentennial Committee will give some lucky lady and her partner of her choice this opportunity with an all-expense paid trip to one of Alabama's truly Ante Bellum wonder cities on the Chatahoochee River.

Chelsea's First Lady will be the guest of the City of Eufaula, Ala., and have her own apartment for the entire time she is there.

A personally guided tour of southern Alabama, to the Gulf of Mexico and Montgomery, the capital of the state, a houseboat trip to the coast, and many more exciting adventures are in store for Chelsea's First Lady. All arrangements are being made by Leo Bishop, former resident of Chelsea, and presently a member of the Eufaula Chamber of Commerce.

Along with the trip, the First Lady will receive a travel bag from Chelsea Card and Gift Shop, a portable hair dryer from Chelsea Hardware, an Instamatic camera from Chelsea Drug, and a \$20 gift certificate from Western Auto.

The First Lady's first runner-up will receive a black and white television set from Heydlauff's, a facial kit from Mary Kay Cosmetics by Betty Koch, two bottles of wine from the Wolverine

Lounge, a \$10 gift certificate from Schneider's Store, and a dinner for two from Stivers.

The second runner-up will receive a Citizens Band Radio from Gambles, a purse of her choice from Karen's Boutique, a selection of Sarah Coventry Jewelry from Norma Jean Smith, four cocktails from Schumm's Restaurant, and a floral centerpiece from Grove's 5 cent & 10 cent Store.

The third runner-up will be presented with a Lane Cedar Chest from Merkel's Furniture, a \$15 clothing certificate from Vogel's, a canned ham from Jiffy Market, a pizza from Thompson's Pizzeria, and a travel bag from Chelsea's Parish Cleaners.

The fourth runner-up will receive a diamond belt necklace from Winans Jewelry, a \$15 clothing certificate from Dancer's Department Store, a needlework kit from Country Craftique, and a case of pop from Kusterer's Market.

The rules for the contest may be picked up at the Bicentennial Headquarters. Each contestant must work or reside within the Chelsea School District. All contestants will receive complimentary boxes of Jiffy Mix from Chelsea Milling.

Finalists will receive facials (Continued on page six)



REBORN-CUTTING CEREMONY: In a memorable moment, Lloyd Bridges, owner of Lloyd Bridges Chevrolet and Traveland, cuts the ribbon to open the newly constructed dealership located

just north of the I-94 overpass on Main St. The facility is spread over four acres of land and will feature a used car lot to be called the "O.K. Corral."



MILLS' TEAM: These jaunty looking Little Leaguers, coached by Fred Mills, are intent on improving their 1 and 2 record as they approach their third week of play. The team has a lot of power potential and demonstrates a well-tuned knowledge of the game. Seated in the back row,

left to right, are Mike Gilligan, Dave Barrels, Al Kuhl, Rod Laler, Shanga Parker, Mark Rosentretre, Mark Porath, and Scott Miller. Crouching in the front row, from left, are Scott Mills, Tim Loucks, Joe Merkel, Kraig Leach, Darrin Rowe, Dave Settle, Phil Sweet, and coach Fred Mills.



Published every Thursday morning at 300 North Main Street, Chelsea, Mich. 48118, and second class postage paid at Chelsea, Mich., under the Act of March 3, 1879.

Subscription Rates (Payable in Advance)
In Michigan: One Year \$6.00, Six Months \$3.50, Single Copies \$.20
Outside Michigan: One Year \$8.50, Six Months \$5.00, Single Copies \$.25

MEMBER
NATIONAL PAPER ASSOCIATION
Founded 1885

National Advertising Representative
MICHIGAN NEWSPAPERS, INC.
257 Michigan Ave.
East Lansing, Mich. 48823

Uncle Lew from Lima Says:

DEAR MISTER EDITOR:

One of the fellows came to the meeting at the country store Saturday night with this clipping where the Defense Department had given a contract to one of our companies to build airplanes to sell to Egypt. There was some discussion following this report about which side we are on in the Middle East, seeing as how we give airplanes to Israel and they ain't on the best of terms with Egypt.

Ed Doolittle said he had saw the piece about the planes to Egypt, and it had said that the reason we were selling to em was because Egypt didn't want to buy any more stuff from Russia. Ed said this makes perfect sense, since the idea in our foreign policy is to take whichever side Russia don't want. At least, Ed said, selling is better than giving when the Government has got to bury the money to buy it afore it can give it. The history of our performance in this balance of power business, Ed said, is that the rest of the world wants to keep shifting the load on the American taxpayer just enough to keep from killing the goose that pays the bills.

Speaking of spending, Mister Editor, I see where England's inflation is about the worst in the world. When you not people coming to this country to get away from inflation and high taxes in England, like a bunch of their high-paid singers and actors are doing, you know things are bad. It seems the sun has been setting on the British Empire since right after World War II when they went into this Socialism in a big way and put everything under Government control.

Clem Webster took note of England's miseries. He said his neighbor's grandson is stationed over there in the Air Force, and he sent home some of their Government pamphlets. Clem got to read some of the little books, and he announced Saturday night that part of England's problem is right there. He said he noted in them pamphlets that the Government charges fer em. When you can't write your Government and get a mailbox full of free advice from any agency you pick you're in trouble, was Clem's words. He said he couldn't be shore, but he was of a mind that Thomas Jeff-

erson put somepin in our Declaration of Independence about the free spreading of information being necessary to the public well being.

Furthermore, went on Clem, he saw by one of them pamphlets called "Women's Roles" that "women's employment often is cited as a cause of divorce." He wanted to know how folks in England feel about paying 60 cents to find out what Americans read coming out of Washington every day. They ain't no way a country can prosper that ain't got Clem allowed, cause it's like buying a ticket on a shotgun the fire station is giving away to make money. You won't ever see the shotgun, but you can allus say you got a free ticket, and your money went fer a good cause.

Yours truly,
Uncle Lew.

Dial-A-Garden Topics Listed

Dial-A-Garden, the system of pre-recorded daily gardening tips is sponsored by the Washtenaw Cooperative Extension Service. The system is in operation 24 hours per day, 7 days per week. Interested persons are invited to call 971-1122 at their convenience and receive timely, up to date gardening information.

Next week's Dial-A-Garden topics are:
Friday, July 16 and week-end: "Blanch Cauliflower and Other Vegetables."
Monday, July 19: "Harvest Vegetables As They Ripen."

Tuesday, July 20: "Controlling Corn Earworms."
Wednesday, July 21: "Extra Nitrogen Will Help Vegetables."
Thursday, July 22: "Harvesting Herbs."

CHRISTIAN DEMOS WIN

Rome—The Christian Democrats have beaten back a strong Communist election bid to gain power in this NATO country and maintained their dominant position in Italian politics.

NURSES INDICTED

Detroit—A federal grand jury has indicted two nurses on five counts of first-degree murder in last summer's series of mysterious deaths at the Veterans Administration Hospital in Ann Arbor, the FBI said.

MICHIGAN MIRROR

By Elmer E. White, Secretary, Michigan Press Association

Beans, Beans... Or so the saying is, beans were thought in the 17th Century. The jawbreakers "carp" owes it origin to a pea-like bean on the east coast of Africa. And boiled beans laced with garlic provided a sure cure to coughs and colds in the Middle Ages.

Such is the lore of the bean offered readers in a special cook book produced under the sponsorship of Michigan's Bean Commission and Bean Shippers Association.

Beans may have made them famous... but Michigan grows them!

The state Department of Agriculture in its publication "Michigan Food Facts" reports that dry edible Navy beans were planted in about 50,000 acres of state land during 1975. The crop totaled some 490 million

pounds, valued at more than \$131.3 million. And those totals—while still higher than those of any other state—were down about 35 percent from 1974. The 1975 yield represented the smallest crop since 1957.

Farming maintains its place as a second largest industry in Michigan, according to Agriculture Director B. Dale Hall.

He reports that in 1975 Michigan farmers received \$1.7 billion for their products, a 4 percent decline from 1974's record year. And on process, market and transportation, and the value of Michigan's agricultural industry is some \$1 billion.

Know the Difference? Tornado... a savage creature of nature that can flatten barns, wreck away automobiles, demolish buildings, kill people and animals.

But if you're like some people, you might not know when you should worry about a tornado if your territory. You get "watch" and "warning" confused. A "tornado watch" means weather conditions are right for a tornado to develop. A "tornado warning" means one of the funnels has been sighted in a specific area.

Bike for Bikers Pedal power is on the increase. With bicycling ever more popular, a pastime for adults and youngsters alike.

And with that popularity, it's also increased as a liability. While they're required to share the road with automobiles, statistics show that 88 bicyclists were killed in 1974 and another 173 were injured.

One answer is bike paths—giving the rider a place to do his thing out of reach of the automobiles and pedestrians too.

Gov. William Milliken recently signed a bill that's designed to encourage townships to build bicycle paths and sidewalks parallel to state highways and county roads. The measure sets up procedures for special assessments for bike paths and walkways, and allows townships to write a hardship exemption for senior citizens on fixed incomes.

More than two dozen bicycle paths already have been completed by the state, and another half dozen are under construction now. The largest is a 30-mile path paralleling I-75 between Monroe and Novi.

Michigan's Department of Highways and Transportation has spent about \$1 million on bicycle path development.

Grads at Work You study hard to learn a job—mechanics, nurse's aide work, maintenance of electrical appliances. Then what?

If you happened to be one of a lion's share of Michigan's 1975 high school graduates in vocational education, you're working full-time, in your chosen field, and pretty well satisfied with it. A survey conducted by the state Board of Education shows that:

—slightly more than 8 out of 10 respondents available for employment have found jobs.

—70 percent of those employed are working full-time.

—80 percent of the employed graduates are somewhat or very satisfied with their jobs.

JUST REMINISCING

Items Taken from the files of The Chelsea Standard

4 Years Ago...

Thursday, July 20, 1972—Mark Monaghan, senior at Chelsea High School, left yesterday for the National AAU Freestyle Wrestling Tournament in Birmingham, Ala., where he will compete in the 115-pound category, facing approximately 30 other wrestlers from across the country.

The Thunderbolt Gun Club appeared before the Lima township Planning Commission to ask for permission to build a deer range on 130 acres off Jerusalem Rd., between Freer and Fletcher Rds., owned by Mr. and Mrs. George Frisinger.

Hal Pennington, former village president, has been appointed to fill the unexpired term of village clerk Richard Harvey, effective Aug. 1. Harvey resigned at Tuesday's meeting, due to removal of his residency from the village.

24 Years Ago...

Thursday, July 17, 1952—Louis H. Burghardt, who has been a partner in the Miller Funeral Home for the past seven months, announced this week that he has purchased the funeral home from Martin E. Miller.

Glenn Feldkamp, of 9980 Chelsea-Manchester Rd., miraculously escaped being killed when he lost control of the tractor he was driving as he was hauling his combine on the road near his home Saturday evening. He swerved to avoid a collision with an oncoming car, lost control of the tractor, went over a fence and into a field, where a passerby caught up with it and shut off the engine.

Jack Howard, 19, of Muskegon and Sylvester Salva, 20, of Detroit, were found guilty of first degree murder in the March 31 death of Anthony Bedard, 19, a fellow inmate of the Cassidy Lake Technical school.

The first load of 1952 wheat was brought to the Blaess Elevator Co. at Four Mile Lake last Friday morning. The load came from the Carl Wollpert farm near Grass Lake. A steady run has continued ever since, William Blaess said yesterday.

34 Years Ago...

Thursday, July 23, 1942—Jerome Burg, son of Mr. and Mrs. J. V. Burg, had the good fortune to catch a six-pound pike while fishing alone on Crooked Lake Monday.

Sam Mohrlock has resigned as night marshal, and the village council has appointed George Doe as day marshal, shifting Franklin Mead to an all-night shift. Mr. Mohrlock had been on the midnight to morning shift, with Mr. Mead working from noon to midnight.

Chelsea came to be named Chelsea after the railroad went through and Sylvan Center and Pierceville were removed to what is now Chelsea. The town was first called Kedron but Elisha Congdon, who platted the town, wanted to call it Chelsea after the place he came from in Connecticut. It was called Kedron because of Lett's creek north of town.

Manchester Chicken Broil Slated Today

Make plans to attend the 23rd annual Manchester Chicken Broil, Thursday, July 15. This is the broil everyone talks about. Some 350 men and boys in the village and rural area are prepared to serve 10,000 from 4 p.m. to 8 p.m. on the Athletic Field. The "harcoal broiled" chicken halves, basted with butter, will be done to a turn!

Optimists and Jaycees sponsor the dinner to raise money for many youth projects. This is the reason everyone is willing to work and volunteer their time. General chairman, Gene Beneschneider, reminds people that with all the inflation the price is the same—pre-sale \$2.75 and \$3 at the gate. All business houses have tickets in advance and so do all men and boys.

Robert Ross heads the publicity committee.

Four charcoal pits, each 100 ft. long are used to broil more than 3,000 halves at a time. Chefs wearing white gloves check the halves as they are slow broiled, lightly salted and buttered during the cooking process. The four tons of charcoal is ordered and Dr. Howard Zindell of Michigan State will again personally supervise the broiling as he did 23 years ago.

The chefs, like elves, have prepared their secret formula dressing for the ton of cabbage for the slaw. The truck load of potato chips is ordered and the boys are getting anxious to wash the half ton of red radishes. A thousand dozen buttered rolls go into the boxes. Whether you eat on the grounds or take the dinners with you, Manchester is ready.

The village police chief and his

he 11 local chapters featuring both ladies and men's fashion will take the stage. Some 100 people are involved in the 90-minute program. Featured will be many originals and some authentic reproductions at the "avaganza." No charge for the attraction. Manchester's Bicentennial gift to the chicken eaters. Groups or individuals who want advance ticket price breaks should make arrangements by calling Ross at 424-8377. There is free shuttle bus service from the parking area to the Athletic Field or, if you prefer, be transported by horse and bus this Bicentennial year—free!

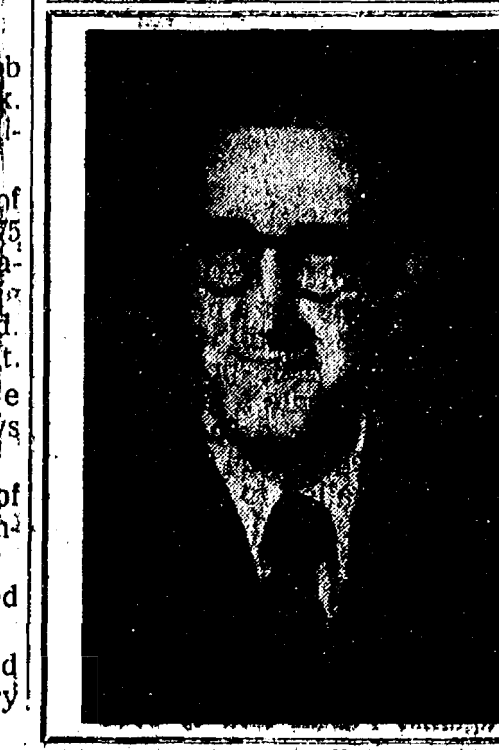
AMERICAN LEGION POST 557

DANCE

SATURDAY, JULY 17
9 to 1

Rannie St. Charles
and the
"SOUNDS OF COUNTRY"

AMERICAN LEGION HOME
MEMBERS and GUESTS



(Political Advertisement)

VOTE AUG. 3 PRIMARY
ELECT
RAY NUSCA
LIMA TOWNSHIP TREASURER
REPUBLICAN

Qualified in accounting and interested in serving you. Elected alternate delegate from 6th District to the 1976 Republican National Convention in Kansas City, Aug. 15.

Your support will be appreciated!

DEXTER TOWNSHIP ELECTORS:

We will be working for you!

NICK HOLLY . . Supervisor
ESTHER GIBB . . . Treasurer
DOUG SMITH Clerk
MATT HINTZEN . . Trustee

Vote Aug. 3 Primary
Dexter Township Hall

Howell Livestock Auction
Starts 1 p.m. Every Monday
Mason 677-8941
The Wise Owl Sows Shin to Howell
Phone 546-2470. Jim Franklin
Market Report for July 12

CATTLE—
Bulk Gd. Choice Steers, \$36 to \$37
Few High Choice Steers, \$37 to \$37.50
Gd. Choice Heifers, \$32 to \$35
Fed Holstein Steers, \$30 to \$35
Dl. Steers, \$30 and down.

COWS—
Heifer Cows, \$32 to \$33
Dl. Commercial, \$27 to \$32
Canner Cows, \$20 to \$27
Fat Best Cows, \$26 to \$30

BULLS—
Heavy Holsteins, \$30 to \$35
Light and Common, \$30 and down.

FEDERS—
400-600 lb. Good-Choice Steers, \$35 to \$40
600-800 lb. Good-Choice Steers, \$32 to \$38
300-400 lb. Good-Choice Heifers, \$25 to \$32
200-300 lb. Holstein Steers, \$20 to \$25
200-300 lb. Holstein Steers, \$24 to \$28

CALVES—
Friesian, \$30 to \$40
Good-Choice, \$30 to \$35
Heavy, \$25 to \$30
Cull & Med., \$15 to \$25
Calves going back to farms sold up to \$40

SHEEP—
Shorn Slaughter Lambs, \$18 to \$22
Cull, \$15 to \$20
Good, \$20 to \$25

WOOL—
Slaughter Lambs, Spring: \$18 to \$22
Slaughter Lambs, Fall: \$15 to \$20
Feeder Lambs, All Weights, \$30 to \$40

HOGS—
210 to 240 lbs., No. 1, \$51 to \$52
200-220 lbs., No. 2, \$50 to \$51
Heavy Hogs, 250 lbs. and over, \$51 to \$55
Light Hogs, 200 lbs., \$25 to \$30

SWINE—
Farrow Light, \$43 to \$43.50
200-250 lb., \$41 to \$41.50
200 lbs. and over, \$39 to \$41

BEANS AND PEAS—
All Weights, \$35 to \$43
Feeder Beans, \$35 to \$40
200 lb. pkts., \$35 to \$38

WHEAT—
2nd Cutting, per bale, 150 to 200
2nd Cutting, per bale, 70c to \$1.25

STRAW—
Rear Bale, 50c to 65c

COWS—
Dairy Cows, \$400 to \$850
Friesian, \$400 to \$850

BEEF SALE!

BEEF SIDES

350-Lb. Avg. **lb. 89¢**

Cut, wrapped, frozen — ready for pick-up

includes —

10 round steaks	6 chuck steaks	3 arm round roasts
8 sirloin steaks	12 rib steaks	2 English roasts
6 porterhouse steaks	2 rib roasts	6/2 lb. short ribs
12 T-bone steaks	4 rump roasts - boneless	6/1 lb. boneless beef stew
6 sirloin tips	5 chuck roasts	80 lb. hamburger
3 swiss steaks		

CUTTING STATEMENT FURNISHED

- SPECIAL -

HOT DOGS
HAMBURG PATTIES

\$5.00 OFF

WITH PURCHASE OF SIDE OF BEEF With Carpan

Coupon good July 15 thru July 22, 1976

PHONE 426-8466

DUNBAR'S
8083 MAIN ST., DEXTER

DEXTER LOCKER
PAUL DUNBAR, OWNER

79¢ lb.

in 10-Lb. Lots

NO WAITING
★
ORDERS READY TO TAKE HOME



T-BALL BRAVES: Third in their league, this team of Braves, coached by Lynn Degener, has shown remarkable prowess on the sandlots. If their steady improvement continues, they will be ready any day to challenge the league leaders. In the front row, left to right, are Dan Degener, Jeff

Harvey, Brad Bauer, Kevin Schaff, Mike Adkins, and Brad Cox. Back row, from left, are Joe McDougall, Mike Feeney, Mike Ball, Ty Anderson, Todd Palmer, David Dresselhouse, Pete Kattula, and Flint Merrill. Coach Lynn Degener is in the background.

Youth Baseball Games Feature Improved Hitting, Fine Pitching

Youth baseball continued into its third and fourth weeks with some hitting and fielding in all games. T-Ball action showed three exciting double plays with tyros winning runs on base. Little League has shown the hitters to be improving while Pony League has been the scene of some very fine pitching duels.

The Indians boasted a successful two weeks of baseball. In addition to the tie with the Yankees, the Indians scored victories over the Reds, 27-19, the Bulldogs, 40-26, and beat the Patriots, 30-15. Degener's team bounced back from their loss with victories over the Bulldogs, 31-10 and the Patriots, 32-12. The Reds recorded a victory over the Yankees by a close score of 29-28. The Reds scored the winning runs in the top of the fifth inning.

The Patriots chalked up a win with a 40-29 trounce over the Bulldogs. Barci's Chargers registered three victories, defeating the Reds,

14-12, Bulldogs, 34-13, and the Yankees, 17-14.

In Little League play, Ackley's Chargers recorded victories over Schaffner's team, 6-2, and Mills' squad, 9-3. Both games were extremely close. In the earlier game Schaffner's squad gave up six runs in the first inning and failed to close the gap as the game progressed. Mills' team led most of the game, bowing only in the final innings. Ackley's team also won their game against Hoffman's squad, 8-1. Schaffner's team rallied to stifle Farley's, 25-4.

Hoffman's Chargers registered two victories with wins over Kelly, 8-3, and Mills, 9-7. Farley's team put one in the win column with an 8-3 score over Mills' squad. The only undefeated team, Niebauer's, continued their unblemished record with unabashed victories over Hoffman, 10-8, and Farley, Kelly's team advanced their league standing defeating Schaffner's, 9-1, and Farley's, 5-3.

Pony League, for the weeks of June 28 and July 5 saw a few closely contested ball games. Schroetenboer's team won, 10-3, over Petsch's team, and 3-1 over Sweet's Chargers. Sweet's team scored the tying runs on a double and a triple with one out in the sixth, but failed to score the needed runs. Schroetenboer's and T. Sprague's nine were deadlocked, 5-5, after seven innings when curfew was imposed.

Petsch's team bounced back from their loss to win, 7-6, over Ralph Owing's squad. 10-1, over Sweet's team and got by J. Sprague's team, 7-6. Wojcicki's team handed Schroetenboer's their first loss, 15-5. Earlier Wojcicki's nine beat T. Sprague by the same score and shut out J. Sprague, 5-0, while nipping Jeff Sweet's Chargers, 4-1. Owing's team was victorious three times to even their record at three wins and three losses. The victories were 6-5 over T. Sprague, 14-12 over Sweet, and 8-0 over J. Sprague.

PONY LEAGUE STANDINGS			
	W	L	T
Petsch	5	1	
Wojcicki	5	1	
Schroetenboer	4	1	1
Owings	3	3	
T. Sprague	1	3	1
Sweet	1	5	
J. Sprague	0	5	

Personal Notes

Mrs. Kay Kiefer of Laguna Beach, Calif., is visiting her sister, Mrs. Alice Rawson of Portage Lake for one week.

First Lady Candidates Entertained

Pat Dittmar and the Jaycees Auxiliary hosted the First Lady Reception at Bicentennial Headquarters Monday, 8 p.m. Mrs. Dittmar introduced committee chairmen, Wallace Wood, Richard Harvey, his wife Virginia, and Barb Krichbaum; Mr. Rockhold from the Rogers Co.; and John White who will tabulate queen votes.

Richard Harvey summarized the activities planned for Chelsea's Bicentennial Week, giving contestants a feel for their responsibilities.

All first lady candidates and their sponsors were introduced, and then informed of the gifts that will be given to the winners. Wallace Wood was present to describe the outstanding features of Eufaula, Ala., the destination of Chelsea's queen for a royal trip as winner of the First Lady contest.

Rockhold concluded the agenda of the reception with instructions to candidates on the rules and regulations of the queen contest. Among these, he outlined the fact that there will be one queen and four runners-up who will preside as members of the queen's Court of Honor. Votes for the first lady candidates will be obtained from advance coupon sales of admission tickets to Chelsea's Bicentennial Celebration. Candidates are allowed to get groups of friends or organizations to sell for her. The contest closes 9 p.m. Aug. 9.

Chelsea's First Lady candidates are: Kathy McCalla (Royal Rural Roosters), Sue McCalla (Wild Wooley Lambs), Nadine Koch (Flaming Belles), Betty Koch (Senior Citizens), Eve Policht, Debbie Bergmann (Blue Bonnet Belles), Anne Steinaway (Cassidy Lake employee, Chelsea Jaycee Auxiliary), Wanda Schiller (Roaring Ruffles), Sheila Carr (Norma Smith), Janie Walz (Waterloo Lilly Belles), and Beth Clark (Heyd-lauff's).

Contestants were feted in an atmosphere of red, white, and blue flowers furnished by Garnets and Chelsea Greenhouse. The reception heralded the beginning of the First Lady competition.

Adult Softball League Standings

As of July 12			
FAST PITCH			
	W	L	T
Anti-Author Centerless	6	0	1
Chelsea Merchants	7	1	
Thompson's Pizza	6	1	
Hackney-Bennett Inst.	4	4	
Jiffy Mix	2	6	
Dunlavy-Krull Const.	3	4	1
Chelsea Milling	1	6	
Zion Lutheran	0	7	
"A" SLOW PITCH			
	W	L	T
McCalla Feeds	7	1	
Walt's Barber Shop	7	1	
Village Motors	5	3	
T & R Pallets	4	4	
IPSCO	4	4	
Huron Valley Walls	2	7	
Norm's Body Shop	0	9	
"B" SLOW PITCH			
	W	L	T
Wolverine Bar	8	1	
Ganja Oil	5	2	
Lloyd Bridges Chevrolet	5	3	
Mark IV	4	4	
Federal Screw Works	2	5	
RETS	2	6	
Hanco	1	7	

BEEF PRICES DROP			
Denver—The price of beef in supermarkets across the nation was down sharply in June compared with a year ago. Shoppers we're even saving a few pennies from what they paid in May, the American National Cattlemen's Association said.			

The current GI Bill, the third such program since 1944, became effective June 1, 1966, according to the Veterans Administration.

equipment operators!



Here's a man's boot every step of the way! Rugged, handsome, ready for a rough day's work anytime. Easy on the feet, too. Stop by—try on Pecos by Red Wing and be convinced!



FOSTER'S MEN'S WEAR

Ph. 475-1606 Chelsea, Mich.

Raymond Nusca Going to National GOP Convention

Raymond Nusca of 1688 S. Fletcher Rd. has been elected alternate delegate from the 6th Congressional district to the 1976 Republican National Convention to be held in Kansas City, Mo., the week of Aug. 15.

Nusca was elected as a republican delegate from Lima township to the Washtenaw county Republican convention. From there he was elected to represent the Republicans at their state convention; whereupon, he was elected to attend the national convention.

His wife, Marjorie, serves on the Lima Township Planning Commission. He has a daughter, Colleen, who will attend Chelsea High school as a junior in the fall.

The art of saying something to please both sides is what explains the way people vote.

Cliff Taylor Is Guest Speaker For Chelsea JCs

At the July 8 meeting of the Chelsea Jaycees, Republican candidate for Congress, Cliff Taylor, was the guest speaker.

Taylor noted he shared the concerns of many of those present that local government should be strengthened and programs such as federal land use planning should not be enacted. Taylor stated, "Federal land use planning would be a step towards taking control of the land away from its owners, diminishing the role of local government and increasing the size of the Washington bureaucracy."

On a related issue, Taylor said, "I believe strongly in local government, not in regional government which would place the tax burden for solving the problems of the urban areas on the smaller communities such as Chelsea."

Subscribe today to The Standard!

**THINKING ABOUT
OPENING YOUR POOL**

— or —

**JUST HAVING PROBLEMS
WITH IT**

We are willing to help. Just give us a call (426-4220) or stop out and see us at:

CRYSTAL CLEAR COMPANY

4757 Dexter-Pinckney Rd. Dexter, Michigan

**Above-Ground & In-Ground Pool
SERVICE - SUPPLIES - CHEMICALS**

Residential and Commercial Pool Openings
Acid Washing - Painting and Repairs.

Summer Store Hours: Mon. thru Fri., 10-6
Saturdays 8-6

Master Charge and BankAmericard Welcome!

Jiffy market

Big Enough To

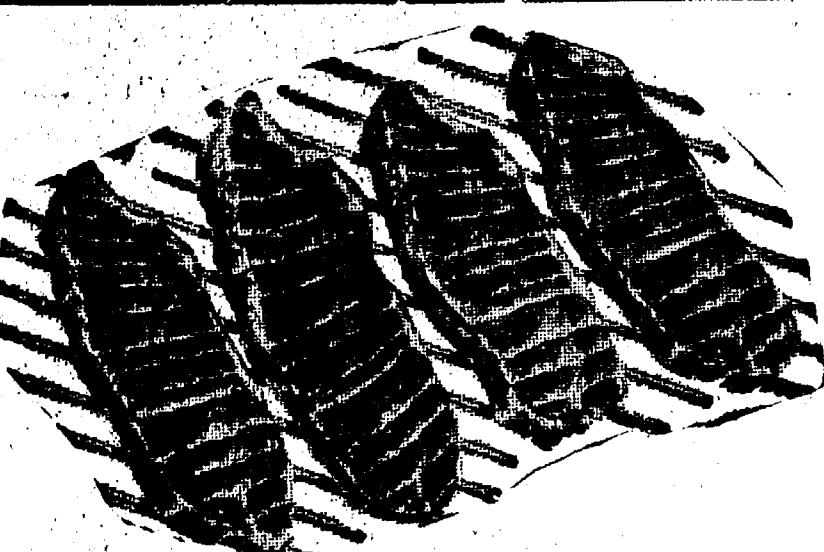
Serve You . . . Small Enough To Know You!

TOP VALUE FOODS - GUARANTEED SATISFACTION - COURTEOUS SERVICE

COMPLETE FRESH MEAT DEPT. - USDA CHOICE BEEF - THE FINEST OF FRESH PORK

U.S.D.A. CHOICE BEEF ROUND STEAK

WHOLE ROUND . . lb.	\$1.49
TOP ROUND . . . lb.	\$1.59
CUBE STEAKS . . . lb.	\$1.59
RIB STEAKS . . . lb.	\$1.49
CHUCK STEAK . . . lb.	99c



Tender Beef with Flavor!
MAHOGANY FARM BEEF
From Dugdale Packing, St. Joseph, Mo.

PORK BUTT ROAST . . lb.	\$1.09
PORK STEAK . . . lb.	\$1.19
HICKORY SMOKED SLAB	
BACON . . . lb.	\$1.09
YOUNG, TENDER	
BEEF LIVER . . . lb.	49c
HOME-MADE	
FRESH SAUSAGE . . lb.	\$1.19

12-OZ. PKG. ECKRICH	
FUN FRANKS . . .89c	
HAMBURGER MADE FROM	
GROUND ROUND . . lb.	\$1.29
HAMBURGER MADE FROM	
GROUND CHUCK . . lb.	\$1.19

FARM MAID HOMOGENIZED WHITE
MILK Gallon **\$1.39**

SPECIAL FORMULA White & Wheat Bread	WESLEY'S QUAKERMAID ICE CREAM Flavor of the Month Peaches 'n Cream	FARM MAID COTTAGE CHEESE	CALIFORNIA HEAD LETTUCE
FRESH HORIZONS INTRODUCTORY OFFER 16-Oz. Loaf	59c	12-Oz. Ctn. 39c	Large Heads 29c

"IT'S GOT A LOT TO GIVE"
PEPSI-COLA 16-Oz. No-Return Bottles **8 pac \$1.27**

FARM MAID SOUR CREAM	SHELL No-Pest Strip INSECTICIDE	VELVET Peanut Butter Smooth or Crunchy	16-OZ. NO-RETURN REGULAR OR DIET
1 Pt. Ctn. 49c	\$1.49	2-Lb. Jar \$1.29	7-UP 8 pac \$1.35

WONDER
COUNTRY STYLE BREAD . . . 1 1/4-Lb. Loaf **29c**

JIFFY MEAT SERVICE CUSTOM CUTTING, WRAPPING, FREEZING. QUICK SERVICE ON BUTCHERING — YOUR BEEF OR OURS.	JIFFY MARATHON GAS PUMPS OPEN 7 DAYS - 7 a.m. to 10 p.m. Regular Gas Lead Free or Premium Gas (Gas prices include all taxes)
★ U.S.D.A. CHOICE SIDES OF BEEF ★ LOCAL FARM GRAIN FED BEEF AVAILABLE ★ FRONTS - HINDS - WHOLE RIB - WHOLE LOINS	THANK YOU — We Appreciate Your Business!

Open With Complete Service, 7 Days A Week
TOP VALUE FOODS **7 a.m. MORNING to 10 p.m. NIGHTS** Sale Prices July 15 thru July 18

BICYCLE LICENSES

Bicycle licenses are now on sale at the Chelsea Police Station.

Old bicycle licenses expired July 1, 1976, and new licenses must be displayed by that date.

POLICE DEPARTMENT

VILLAGE OF CHELSEA

COUNTRY AUCTION

Beginning at 11:30 a.m.

**North Lake
Methodist Church Grounds**

Rain Date, Saturday, Aug. 14, 11:30 a.m.

Appliances, household goods, tools, sports equipment and many fine antiques.

LUNCH ON GROUNDS - PLENTY OF PARKING

PITTSBURGH HOUSE PAINT

SALE

Flat Latex Exterior gal.	\$7.99
Sunproof Latex Exterior . . gal.	\$9.99
Sunproof Oil Base Exterior gal.	\$10.99

Prices Apply to White, Ready-Mixed and Pastel Colors Only.

CHELSEA HARDWARE

110 S. Main St.

Phone 475-1121



CROWING WITH DELIGHT are these members of Waterloo's Royal Rural Roosters and Rooters with the plaque they presented to Chelsea during their Bicentennial celebration. The plaque will be displayed at Chelsea Fairgrounds.

More than 15,800 GI Bill students applied for educational loans in 1975, the first year for this Veterans Administration program.

Residential - Commercial REMODELING
FREE ESTIMATES
ib V. JENSEN and SON
LICENSED BUILDER
378 Spring Lake Drive
Chelsea, Mich.
PHONE 475-1820

Girls Softball League Results

Athletics 23, Reds 11.	
Angels 20, Braves 11.	
Indians 20, Yankees 18.	
Standings, as of July 13	
Twins 5	1
Angels 15	0
Athletics 4	1
Indians 2	3
Reds 1	3
Braves 1	1
Yankees 0	5

In the quest for success, just remember that there is no substitute for character or service.

VOTE AUG. 3
SHARON SALLY
Waterloo Township
Clerk

NELLIS PHARMACY

9477 N. Territorial Rd., Dexter Ph. 426-4680
1/4 mile west of Dexter-Pinckney Rd.

Reg. Price	Your Price
\$2.79 TYIENOL Pain Tablets (100s)	\$.99
\$2.39 SOLARCAINE Aerosol Spray, 4 oz.	\$1.78
\$2.19 MYLANTA, (100's)	\$1.44
\$2.25 NOXZEMA Skin Cream, 1 oz.	\$1.59
\$1.39 SINE-OFF Tablets, 24's	\$.87
\$1.99 ARM IN ARM Deodorant, 8 oz.	\$1.07
\$3.80 TINACTIN Cream, 15 gm.	\$2.17
\$1.75 VISINE Drops, 1/2 oz.	\$1.16
\$1.55 TAME Cream Rinse, 8 oz.	\$.94
\$1.64 WHITE RAIN Hair Spray, 11 oz.	\$1.14
\$1.85 EARTH BORN Shampoo, 8 oz.	\$1.27
\$.95 ALKA-SELTZER tablets, 25	\$.64
\$1.89 ROUX FANCIFULL Rinse, 16 oz.	\$.99
\$2.59 ALBERTO VO-5 Hair Spray, 16 oz.	\$1.52
\$2.29 SELSUN BLUE Shampoo, 4 oz.	\$1.46
\$1.69 KAOPECTATE Concentrate, 8 oz.	\$1.37
\$2.19 CONTAC Cold Capsules, 10's	\$.99
\$4.19 METAMUCIL Powder, 14 oz.	\$2.96
\$2.23 PREPARATION H, 12's	\$1.77
\$2.00 MISS CLAIROL Creme Formula, 2 oz.	\$1.18
\$1.69 PAMPERS Overnight, 12's	\$1.16
\$2.19 BABY OIL, Johnson, 10 oz.	\$1.33
\$1.39 SMA Formula, 32 oz.	\$.88
\$1.89 INSULIN SYRINGES, BD, 10's	\$1.27

HAWAIIAN TROPIC SUN PRODUCTS, any item\$1.00 off
POLAROID GLASSES, 30% off DR. SCHOLL'S, any item 30% off
CIGARETTES, R-KS-F\$3.69 CIGARETTES, 100's\$3.79

The STORE That SAVES You More

Barbara Duerr, Alan Williams Exchange Vows at St. Paul Church

Barbara M. Duerr, daughter of Mrs. Adolph Duerr, Jr., and the late Mr. Duerr, 37, of Chelsea, married Alan E. Williams, son of Mr. and Mrs. William E. Williams of Westland, June 13 in St. Paul United Church of Christ of Chelsea. The ceremony was performed by the Rev. B. Ratcliff.

More than 200 guests gathered to witness the exchange of nuptial vows, highlighted by the performance of vocalist Ronald Harris and organist Mrs. Ronald Harris. The bride was given in marriage by her uncle, Hermann Allgaier, who traveled from Germany with his wife, Cary, to take part in the ceremony.

The bride chose an organza, high-necked gown trimmed in Venice lace, with an embroidered cameo yoke, Venice lace daisy applique bodice, and bishop sleeves. Her headpiece, with illusion veil, was also adorned with Venice lace. She carried a cascade bouquet of white roses, baby's breath and solid roses.

Christine Duerr, sister of the bride, served as maid of honor. She wore a melon knit sleeveless gown, with bright orange and ivory accents on the bodice and matching melon and ivory bolero jacket. She held a bouquet of melon carnations, white daisies, tropicana roses, and baby's breath.

Bridesmaids were Paula Gurney of Grosse Pointe Woods, Pat Eisele of Auburn Heights, Mrs. LouAnn Churches of East Lansing, sister of the bridegroom, and Sue Buck of West Bloomfield Hills. Their gowns were identical in style to that of the maid of honor but featured a corolla brown and ivory accented bodice.

The bride's mother was attired in a long, flowing, mint-green chiffon with matching jacket. She wore a corsage of pink roses and baby's breath.

The mother of the bridegroom appeared in a yellow knit gown with matching jacket. She wore a corsage of stephanotis.

Robert Fischer of Westland served as best man. He was assisted by ushers Michael Coger of Westland, Clifford Roberts, also of Westland, Thomas Churches of East Lansing, brother-in-law of the bridegroom, and Andrew Roan of Westland.

Following the wedding ceremony, a reception was held in the UAW Hall of Chelsea. Jody Bennett poured punch and Josephine Bennett cut the bridal cake.

The former Miss Duerr attends Western Michigan University where she is majoring in business administration.

Mr. Williams is an accounting and finance major at Western Michigan University.

Both will graduate in December, 1976. Mr. Williams is currently employed by Hollowell Engineering of Detroit.

The couple honeymooned in the western United States, returning to Westland where they make their home.

Inverness Lady Golfers Entertain at Personal Guest Day

July 8 was personal guest day for the Inverness ladies day golfers. There were 70 women present. After nine holes of golf, they enjoyed a pot-luck salad luncheon.

Guest prize-winners were: Low gross, to Marty Waring, with a 46; low putts, to Marian McCullough, with 15; drive closest to the pin, to Nancy Hanson; and longest putt by Mary Moore.

For the members, low net was won by Helen Brown with 49; Eleanor Douglas and Liz Prising tied for low putts at 13; closest to the pin went to Per Hamilton and Mabel Lloyd sunk the longest putt.

Thursday, July 15, the Inverness ladies will be guests of Ann Arbor Country Club.

Sidewalk Days...

(Continued from page one)

the "Chelsea Bienenhehl" at 8:30 a.m.

The Sidewalk Days will continue throughout the day, and who knows there might be another bargain you overlooked the first time around, or some interesting craft object you can't resist. You may shop up to the last minute, 5:30 p.m., and still have plenty of time to get ready for the Queen's Ball in the evening.

And last, but not least, don't worry about snacks and lunches, we wouldn't dream of letting you go hungry. See you there!

On Friday and Saturday the VFW Auxiliary will have coffee and doughnuts and rest facilities at their hall on Main St. On Friday they will be selling a lunch for everyone.

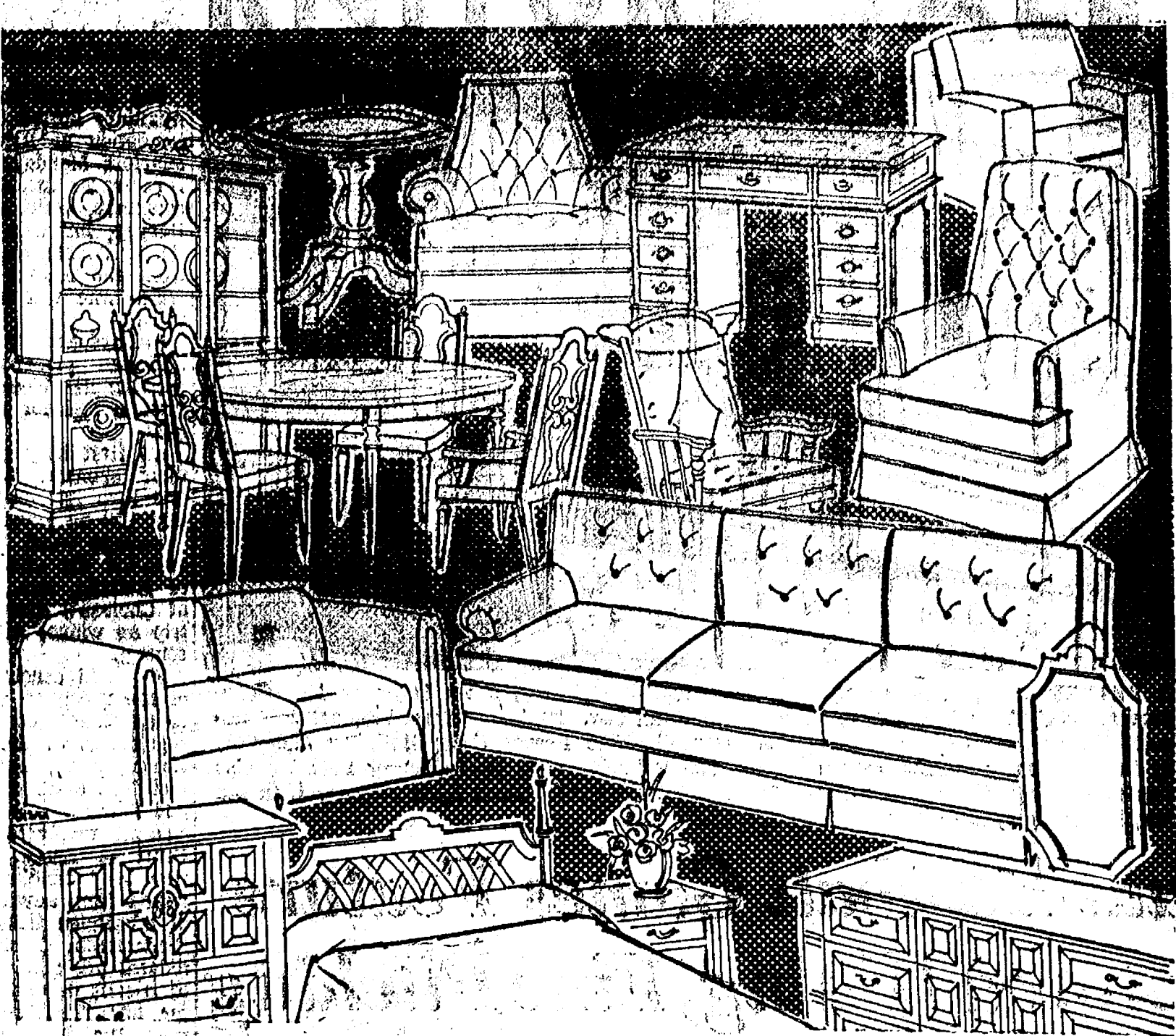
Almost nine million GI home loans, valued at \$118 billion, have been guaranteed by the Veterans Administration since World War II.

(Political Advertisement)

WHO IS JIM TAYLOR?

Metzger's German RESTAURANT
IMPORTED & DOMESTIC BEERS & WINES
COCKTAILS
NOW OPEN SUNDAYS
11:30 a.m. 'til 8 p.m.
For more information call 668-8987
203 E. Washington, Ann Arbor
Between S. 4th & 5th Ave.

FURNITURE SALE



WAIT NO MORE!
Our Biggest Summer Sale Is Here.
ALL STOCK FURNITURE
REDUCED 15% to 50%
SAVE 10% ON ALL SPECIAL ORDERS
Fine Quality Furnishings - Great Savings for You.



CARPET SALE
SAVE 10% to 45% ON CARPET
SAVE 15% ON PADDING
SAVE 20% ON INSTALLATION

Merkel
HOME FURNISHINGS

Main Street in Chelsea. Open Monday and Friday nights until 9:00 phone 475-8621
Chicago Blvd. in Tecumseh. Open Friday nights until 9:00 phone (517) 423-2205
Professional design consulting

VFW Auxiliary Makes Plans for Summer Events

A regular business session of the VFW Auxiliary of Chelsea, Mass., was held Monday, July 12, 1976, with 12 members in attendance. Reports of the 50th annual department convention held in St. Louis, Mo., June 2-7, were given by delegates Joan Barnes, Betty Smith, Eulalie Packard, and Lucy Platt, who attended the convention.

The Chelsea Auxiliary received awards for outstanding performance under the following titles: Cancer Aid and Research, Membership, Voice of Democracy, Local Station, National Home and Food Council.

Citations were given to Lucy Platt, Voice of Democracy chairman and to Mary Kniss, Membership chairman and Cancer Aid and Research chairman. Five other ribbons and citations were presented to the Auxiliary, emphasizing its very successful year under president Joan Barnes.

Lucy Platt, P.P.P.V. chairman, stated there were 100 penny displays in competition by the Auxiliary.

The following members were appointed to work on the local auxiliary policy rules: Gertrude O'Dell, Norma Seifried, Lucy Platt, chairman, Bessie Sharp, and president Betty Smith. Marjorie Johnson was elected to the membership committee and will be initiated at the next meeting in August.

A caravan of Post and Auxiliary members, their families, and two guests attended the annual carnival held at the National Home at Eaton Rapids, Sunday, July 11.

An Auxiliary planning meeting was held on July 12, 1976, in the VFW hall at 7:30 p.m. All chairman and officers are requested to be present, if possible.

Eulalie Packard, Americanism chairman, was appointed to present the Auxiliary colors at the Bicentennial Spectacular. By securing a state permit the Auxiliary plans to have the VFW hall open, serving food to the public on Chelsea Sidewalk Sales Days Aug. 13 and 14. The VFW hall will also serve as a restaurant area at street level.

A sixth district planning meeting will be held Sunday, July 18, in Hamburg.

Hospital chairman Gertrude O'Dell reported on the party held for patients at the Ann Arbor VA Hospital on June 14. She stated 94 patients were served and enjoyed bingo games. Letters of thanks were read from Ruth Otto and William Balfour, VA Hospital staff who organized the special event from their end.

The next regular meeting will be Aug. 9, at 8 p.m. in the VFW hall.

Denna L. Brand, Gary Wahr Speak Vows in Brooklyn Church

Donna Louise Brand, daughter of Mr. and Mrs. Floyd E. Brand of Manchester, and Gary Lynn Wahr, son of Mr. and Mrs. Norman W. Wahr, July 10 in St. Mark's Lutheran church of Brooklyn, N.Y., were united in marriage by the Rev. Lenhart E. Bittel.

Mrs. Carolyn Leicht performed three vocal solos as the couple exchanged nuptial vows, "Wedding Prayer" by Dunlap, "O Perfect Love" by Barnby, and "The Lord's Prayer."

The bride chose a gown of organza over taffeta, with Venice lace bodice, bishop sleeves, and full, circular skirt trimmed in Venice lace. Venice lace also adorned her camelot headpiece with silk illusion veil. She carried a cascade bouquet of white roses, stephanotis, and baby's breath. A cross of blue miniature carnations was inserted inside the arrangement.

Serving as matron of honor was the bride's sister, Mrs. Diane Brunson of Hanford, Calif. She was attired in a long, pastel blue, organza over taffeta gown, with princess waist and caplet sleeves, trimmed in Venice lace. Her white princess flower basket was filled with white daisies, miniature green and blue carnations, baby's breath, and was accented with blue streamers.

Bridesmaids were Mrs. Esther Bradley of Ypsilanti, cousin of the bride, and Georgia Cordrey of Battle Creek. Their costumes matched that of the matron of honor, only were in the shade of mint green. They wore wide-brimmed hats with ribbons corresponding in color to their gowns. They carried baskets of white daisies and miniature green carnations, accented with green streamers.

The mother of the bride appeared in a French blue chiffon, floor-length dress with sequin waistband. Her white rose corsage was dotted with silver and baby's breath.

The bridegroom's mother was dressed in a champagne-beige lace, floor-length gown with tapestry belt. Her Woburn Abbey rose corsage included accents of baby's breath.

Flower girl Angela Brand, niece

Bicentennial Notes

Attention Belles: We, the Lady Lakers hereby challenge the Belle Bottom Belles to a barefoot tug-of-war July 24 at 1 p.m. Tug with all your might and you still may end up in the lagoon on North Lake in back of the Inverness Inn! Should you not fear getting your bottoms wet or shrinking them, dare to be great and accept this challenge by contacting Madam Lady Lady at 475-1719 or Calamity Jane at 475-2419. We also hereby challenge the Waterloo Lily Belles to a very wet volley ball game July 24, following the above challenge at approximately 3 p.m. on North Lake. Lilies are white and if without fright accept this wet challenge before daylight July 28.

We, the Dana Blue Beards, will put the mirrors away if the Brewery Boys set their steins down long enough to play a softball game at Chelsea High School, Sunday, July 18.

We, the Sons of Liberty, do hereby challenge the Brewery Boys to a softball game to be played at the South school field Saturday, July 24, at 7 p.m.

Attention all ready, willing, and able-bodied Belles' chapters! We, the Minutemaid, do hereby challenge any of you brave (or not so brave) Belles to a watermelon-eating and seedspitting contest to be held Friday, July 23 at 8 p.m., downtown Chelsea. Any chapter interested in competing, contact Jan Grenier, 475-2305, or Pauline Parata, 475-7418 by Wednesday, July 21. Each participating chapter is responsible for supplying their own watermelon and lots of "wind."

The Wild Woolly Lambs defeated the Waterloo Lilies in a softball game July 9 at Waterloo. Despite the rain, both teams played a good game.

Watch out Whisker Sufferettes! We the "Crazy Socks" team of the Belle Bottom Belles hereby accept the challenge of a softball game Aug. 1 at 2 p.m. Belle Bottom Belles.

More than 1,300 Veterans Administration benefits counselors are assigned to college campuses either full time or on a part-time basis to assist GI Bill students.

Telephone Your Club News To 475-1371.



Mr. and Mrs. Daniel Roberts

Janet Wackenhut, Daniel Roberts Wed Recently at Zion Lutheran

Janet Wackenhut of Lansing, daughter of Mr. and Mrs. Lorenz Wackenhut of 11730 Waters Rd., and Daniel Roberts, son of Mr. and Mrs. Theodore Roberts of Manchester, were married Friday, May 21, in Zion Lutheran church at 7:30 p.m. The ceremony was performed by the Rev. John R. Morris.

Margaret Kemmer of Manchester was vocalist for the ceremony. She sang "The Wedding Song" and "One Hand, One Heart."

The bride wore a white, floor-length gown with short cupped sleeves. The bottom of the dress was accented with a sheer ruffled layer. She donned a white hat with ribbon streamers, trimmed to complement the dress. She carried a basket bouquet of white daisies, mingled with sweetheart roses and baby's breath.

Mrs. Nola Freysinger of Chelsea, sister of the bride, served as matron of honor. She wore a light blue knit, empire waist, a-line dress with matching shoulder cape. Her picture hat was wrapped in a sheer overlay with blue and yellow ribbon streamers. Her flowers were blue, white, and yellow daisies with yellow sweetheart roses in a floral basket arrangement.

Bridesmaids were Gail and Sharmar Wackenhut, sisters of the bride, and both of Chelsea, Guadalupe Martinez of Lansing, and Anita Aaron of Chelsea. Their dresses were of yellow knit, em-

pire waisted with a-line skirts, accented with matching shoulder capes. They wore yellow picture hats with a sheer overlay and daisies with blue stephanotis and baby's breath.

The bridegroom's mother wore a gown of blue chiffon with a sheer flowered vest overlay.

Kimberly Rene Wackenhut, niece of the bride, was flower girl. Serving as best man was David Roberts of Manchester, brother of the bridegroom. He was assisted by ushers John and Joseph Roberts, brothers of the bridegroom, Ron Brueckner, and Mark Chapin.

The wedding reception was held at Tumescuh Products Hall, and featured entertainment by "The Roamers" band. Mrs. June Bales of Ann Arbor, cousin of the bride, attended to the guest book. Mrs. Lynn Klink of Chelsea assisted with the bridal cake.

Following a honeymoon to Virginia, the newlyweds will reside in Lansing.

The former Miss Wackenhut is currently a junior attending Michigan State University. She is employed as a dental assistant in Lansing. She graduated from Chelsea High school in 1973.

Mr. Roberts is a junior at Jackson Community College. He graduated from Manchester High school in 1970.

Kathy Louise Fulks, John Trudell Speak Vows in Methodist Church

Kathy Louise Fulks of Auburn Heights, daughter of Mr. and A. E. Fulks of 405 Madison St., became the wife of John Robert Trudell of Lakeville, son of Mr. and Mrs. Joseph H. Trudell of Oxford and Delray Beach, Fla., in a marriage ceremony held June 26 at First United Methodist Church of Chelsea. The 3:30 p.m. wedding was performed by the Rev. Marvin McGallum and the Rev. Father Philip Dupuis.

More than 150 guests gathered together for the ceremony, highlighted by two vocal solos performed by James Theunick, the bride's principal. He sang "Ave Maria" and "The Lord's Prayer." Mrs. Max (Sherry) Plank played a flute music prelude.

The bride wore a white chiffon gown featuring pleated chiffon sleeves, a ruffled square yoke, and ruffled hem. Her costume was accented with a white, Venice edged picture hat with white silk illusion bow and streamers. She carried a cascade bouquet of white daisies, stephanotis, English ivy, and baby's breath.

Mrs. Michael (Susan) Sova of Leslie served as matron of honor. She was attired in a cornflower blue, ruffled gown with antique white lace on the bodice and sleeves. She wore a natural straw picture hat with matching blue ribbon streamers. Her straw basket of flowers was filled with white daisies, yellow miniature mums, baby's breath, and bachelor buttons.

Mrs. Henry Clay (Diana) Dodson of Berkley, Susan Burkhardt of Amherst, Mass., and cousin of the bride, and Margaret N. Lane of Birmingham, were bridesmaids. Their gowns matched that of the

Lost, Found Items At Sheriff's Office

Did you lose some keys, a wallet or other sundry items during the Bicentennial Week?

The Dexter station, Washtenaw County Sheriff's Office, has a lost and found department filled with items found on the streets last week.

Anyone who has lost an item may stop at the station, 8080 Grand St., and claim their belongings.

Bulova Accutron® Time for the price of ordinary time.



Now from \$75.

Never before could you have such a good time for such a good price. Because now, you can afford Bulova Accutron... the watch that gives proven, time-tested electronic accuracy 24 hours a day. Without ever winding.

His: Stainless steel, Calendar, Blue dial, \$108.
Hers: Silver-tone case, Silver dial, \$75.
In gold-tone with champagne dial, \$85.

WINANS JEWELRY

We recommend genuine Accutron power cells. Other cells not meeting Accutron specifications may cause a malfunction.



The playground set from



SUMMER CLEARANCE

Excellent selection of toddlers through 6x in girls, 2T thru size 8 in boys.

25% to 1/3 Off

BankAmericard Master Charge American Express

VOGEL'S

108 S. Main, Chelsea PH. 475-1806
Open Mon.-Thurs., 9-5:30
Fri., 9-8:30, Sat., 9-5

DANCER'S ANNUAL SUMMER SALE

INFANTS & GIRLS WEAR

Sunsuits, Crawlers, Coveralls, Sleepwear, Dresses, Skirts and Jumpers
1/3 OFF

Jackets, Swimwear, Shorts, Short Sets, Tank Tops, Halter Tops
1/2 OFF

MEN'S & BOY'S WEAR

Shortsleeve Knit and Broadcloth Shirts, Bermudas and Cut-Offs, Pre-Washed Denim Jeans, Colored Dress Jeans (one week only), Summer P.J.'s, Summer Caps and Hats, Leisure Suits
1/3 OFF

WOMEN'S WEAR

Sportswear and Co-Ordinates, Dresses, Skirts, Slacks, Knit Tops, Blouses, Purse & Jewelry
1/2 OFF

Pantsuits, Sleepwear and Robes
1/3 OFF

Use Your Master Charge or BankAmericard
OPEN FRIDAYS TILL 8:30 p.m.

112 S. MAIN ST., CHELSEA PH. 475-1811

CARPET REBIRTH

Give your carpet a new lease on life by cleaning it regularly.

JET SPRAY CARPET CLEANING

Use Your BankAmericard Phone 761-3025 or 475-1509 Ask for John Lixey.

Thinking CARPET? Think SCHNEIDER'S

Visit the wonderful world of carpeting at Schneider's, one of the area's finest, full-service carpet stores, conveniently located in West Ann Arbor on Wagner Road between Jackson and Liberty.

Schneider's carries a broad selection of quality, name-brand carpets at prices consistently among the lowest in the entire area. Try us.

662-9332 OPEN MON & FRI NIGHTS TIL 8:30 PM

SCHNEIDER CARPET CO.

745 S. WAGNER RD. ANN ARBOR

Community Calendar

Washtenaw County Pork Producers annual picnic, 1 p.m., July 18, at Leonard and Janet McCall's Greenwood Farm, 481 Steinbach Rd. Michigan's Pork Queen, Laurie McCalla, will be featured. Beverages provided. Bring tableware and a dish to pass.

Inquiries regarding the Chelsea blood bank may be directed to Harold Jones in the event that Mrs. Dudley Holmes is unavailable, or to Cornelia Fry, American Red Cross in Ann Arbor, 971-5300.

Lima Township Board meets regularly the first Monday of every month, 8 p.m. at Lima Township Hall.

Sharon Township Planning Commission regular meeting third Wednesday of each month.

McKune Memorial Library Summer Reading Program for children begins June 28 and continues through July 31.

Flea Market, North Lake United Methodist church, beginning May 8 and every Saturday thereafter, 10 a.m. to 4 p.m. Lunch counter. Dealers wanted. adv46tt

Lyndon Township Planning Commission meets the second Thursday of the month at the Town Hall at 8 p.m.

Chelsea Rebekah Lodge No. 130, first and third Tuesday of each month at 7:30 p.m.

Humane Society of Huron Valley has dogs and cats for adoption. Owners may reclaim their lost pets. Phone 662-5585. Open from 9 a.m. to 5 p.m. daily; Sunday, 1 p.m. to 5 p.m. 100 Cherry Hill Rd., quarter-mile south of Plymouth Rd. at Dixboro.

Tours of Chelsea Community Hospital and surgical center are available for small groups. To arrange for tours, call: Neva Jordan, 426-8027, or Dorothy Miller 475-8020.

Chelsea Area Historical Society is taking 1976 annual memberships. Applications for membership may be picked up at McKune Memorial Library, or write Box 334, Chelsea 48118, or telephone 475-8968 for more information.

Sylvan Township Board meeting the first Tuesday of the month, at 7 p.m., at Sylvan Township Hall.

Sharon Township Board regular meeting first Thursday of each month.

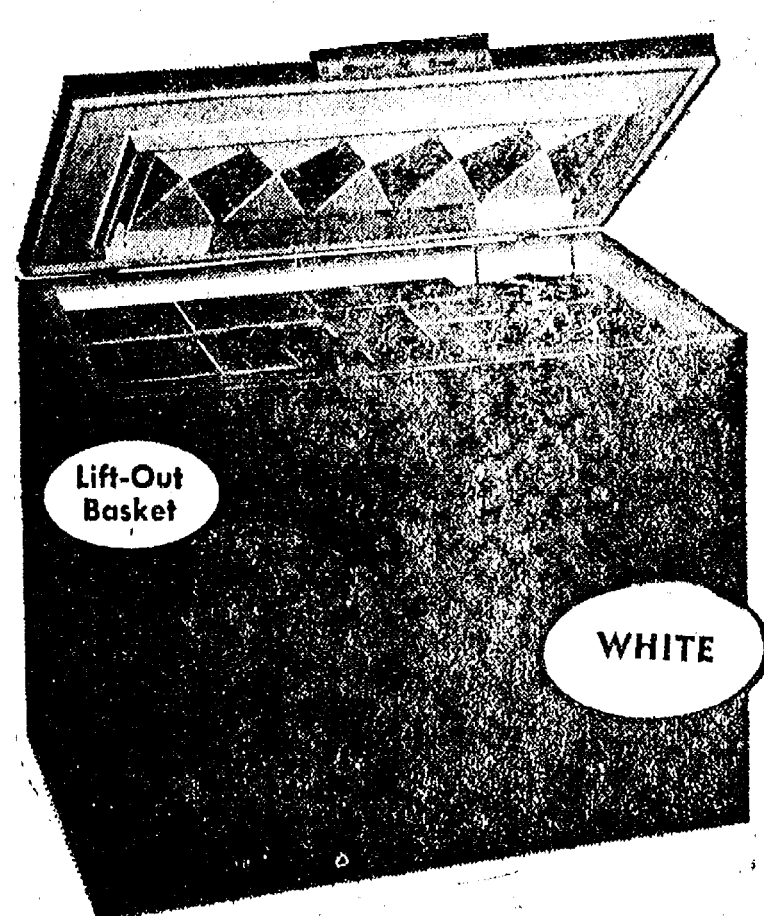
DUANE ROWE

MASTER PLUMBER

18530 Bush Road
Chelsea, Mich. 48118
Phone 475-2051

GO GAMBLES
110 N. MAIN PHONE 475-7472

FREEZER SALE



CORONADO 15.57 Cu. Ft. CHEST FREEZER

Use Our Budget Pay Plan!

\$229⁹⁵
SAVE \$40.00

Space age insulation permits 15.57 cu. ft. storage in less floor space! Holds 545 lbs. so you can buy in quantity and save. Basket, dividers, lid light. Cold control; drain, 5-year warranty on refrigeration system.

44-3060,79

DEATHS

Mrs. William LaRoe

Dies Monday, July 12, at Rest Home in Ypsilanti

Mrs. William (Irene Belle) LaRoe, formerly of 106 W. Middle St., died July 12 at Parkview Rest Home, Ypsilanti. She was 83. Born April 23, 1893, in Ford, Ill. Mrs. LaRoe was the daughter of Phillip and Mary (Banks) Brower. She married William LaRoe Dec. 25, 1904. He died June 10, 1952.

Mrs. LaRoe had been a resident of Chelsea since 1949 before moving to the rest home in 1974. She was active in the Chelsea Community Fair, and a member of the Seventh Day Adventist church of Jackson.

Surviving members of her family include five sons, William R. of Chelsea, Charles and Carl of Jackson, James of Ann Arbor, and Clifford of Kalkaska; one daughter, Mrs. Walter (Mary) Mitchell of Ann Arbor; 44 grandchildren; and many great-grandchildren. Four sons and one daughter preceded her in death.

Funeral services will be Thursday, July 15, 2 p.m. at Staffan Funeral Home with the Elder Arthur Covell officiating. Burial will follow in Oak Grove Cemetery. Memorial contributions may be made to the Mission Fund of the Seventh Day Adventist church, Jackson.

Gerald F. Beissel

Chelsea Native Dies Sunday Enroute to Gaylord

Gerald F. Beissel, 60, of Concord died Sunday night, July 11, enroute to Gaylord. He was dead on arrival at Otsego Memorial Hospital, Gaylord.

Mr. Beissel was born and raised in Chelsea. He was the former deputy district governor of the Lions of Michigan, past president of Concord Lions Club, past zone chairman and a member for 32 years.

In Concord, Mr. Beissel was owner and operator of Beissel Allied Building Center for 32 years, and developer of Swains Lake Hills. He was also a former Concord village president, and a founder of St. Catherine Labourer church, Concord.

Survivors include his widow, Margaret; three daughters, Mrs. Judy Heinowski of Gaylord, Mrs. Carolyn Hasbrouck of Bronson and Patricia Beissel of Albion; a son, James of Concord; six grandchildren; two sisters, Mrs. Eleanor Staudacher of Jackson and Mrs. Julianne Scott of Chelsea; and two brothers, Richard of Ann Arbor and Edward of Chelsea.

Funeral services will be held 10 a.m. Thursday, July 15 at St. Catherine Labourer church, Concord, with the Rev. Fr. Joseph Wright officiating. Rosary was recited Wednesday, 7:30 p.m. at Murdock Funeral Home, Concord. Burial will be in Maple Grove Cemetery.

Memorial contributions may be made to Lions Club Sight Conservation Fund, in care of Dwight A. Aldrich, Concord.

Sara Johnson Granted Academic Scholarship

Sara Johnson, 550 Howard Rd., is the recipient of a 1976-77 academic scholarship awarded to more than 440 recent high school graduates by Western Michigan University.

The scholarship program, administered by the Western Michigan University office of student financial aid and scholarships, rewards academic excellence and scholarships, rewards academic excellence and helps alleviate the financial needs of students and their families.

Sara is a 1976 graduate of Chelsea High school.

Mrs. George Hoffman

Ex-Dearborn Area Resident Dies at Methodist Home

Mrs. George W. (Wilhelmina L.) Hoffman of Chelsea United Methodist Retirement Home died Thursday, July 8, at the age of 84. She was born June 12, 1892 in Livingston county to Frederick and Wilhelmina (Rohring) Roepcke. She married the Rev. George W. Hoffman Feb. 7, 1911. He preceded her in death Nov. 8, 1951.

Mrs. Hoffman had worked with her husband for more than 40 years in the Ohio conference of the Methodist Church. After retiring, they worked in the Port Huron and Detroit conferences.

Mrs. Hoffman came to the Methodist Home June 2, 1969, from Dearborn Heights.

She is survived by two sisters, Mrs. J. A. (Genevieve) Cesaric and Mrs. G. (Freda) Lambright; one daughter, Mrs. Graydon (Vivian) Scastrum of Dearborn Heights; two grandchildren; and seven great-grandchildren.

Funeral services were held Saturday, June 10 in Chelsea United Methodist Retirement Home chapel with the Rev. Ira Wood of Bellingham. Burial followed in Cadillac Memorial Gardens of Westland.

Arrangements were by Staffan Funeral Home.

Elmer L. Koebbe

Freedom Township Resident Dies at Chelsea Hospital

Elmer L. Koebbe of 11115 Pleasant Lake Rd., Freedom township, died Saturday, July 10 at Chelsea Community Hospital. He was 88. Born Oct. 28, 1889, in Freedom township, Mr. Koebbe was the son of Lewis and Mary (Gieske) Koebbe. He married Cecilia Heim on Nov. 10, 1914. She survives.

Mr. Koebbe had worked for Ford Motor Co. as a crane operator for more than 40 years. In addition to his widow, he is survived by one brother, Harold Koebbe of Dearborn; one sister, Mrs. Alma Kuhl of Manchester; two sons, Donald Koebbe of Gibraltar and Robert Koebbe of Lake Orion; six grandchildren; and five great-grandchildren.

Funeral services were held Wednesday, July 14, at 11 a.m. in St. Mary's Catholic church of Chelsea with the Rev. Fr. Raymond R. Schinkert officiating. Burial followed in Mt. Olivet Cemetery.

Rosary was recited Tuesday, July 13, 8 p.m. at Staffan Funeral Home.

Aaron Livermore on Dean's List at JCC

Aaron Livermore, son of Mrs. P. A. Livermore of 3550 Mt. Hope Rd., Grass Lake, was placed on the Dean's List of outstanding students at Jackson Community College for the Winter Semester 1976.

Aaron, who completed his freshman year at the college, is majoring in occupational education.

NOW OPEN

THE GLASS BARN

OLD & NEW GLASS
ANTIQUES
& COLLECTIBLES

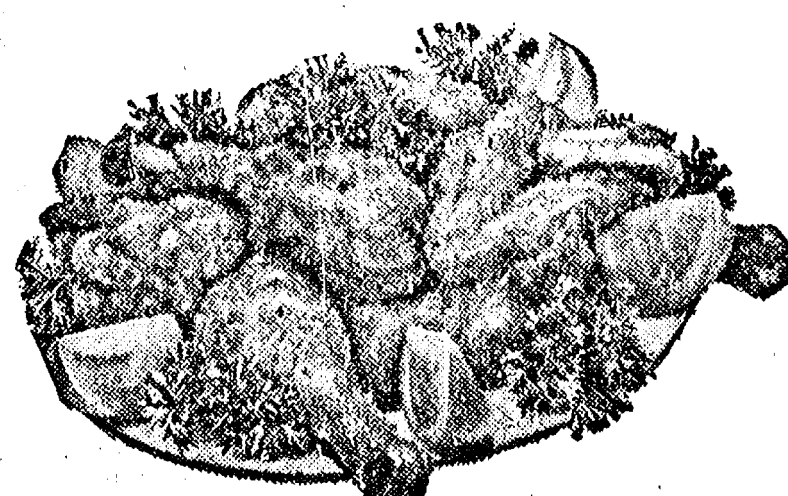
DEPRESSION GLASS
A SPECIALTY

ARLENE HARGRAVE

12719 Roepcke Rd.
Gregory Ph. 498-2849

OPEN: by chance
or appointment.

CHICKEN is still SPECIAL on TUESDAY NIGHTS at the CAPTAINS TABLE



All you can eat of Deep-fried Chicken, French Fries, Biscuits and Honey, plus a trip to our delicious Salad Bar.

\$2.95

The Captains Table

8093 Main St., Dexter
426-3811

NOW SERVING Spaghetti and Meat Ball Dinners
Includes Salad and Roll
EACH SATURDAY EVENING

Mon.-Wed. 6 a.m.-9 p.m.
Thurs., Fri., 6 a.m.-10 p.m.
Saturday, 7 a.m.-9 p.m.

BIRTHS

A daughter, Allison Marie, to Mr. and Mrs. Dan Parsons of Grass Lake on July 10. Maternal grandparents are Mr. and Mrs. Andrew Ford of Lompoc, Calif., and paternal grandparents are Mr. and Mrs. Donald Parsons of Grass Lake.

A son, Steven Michael, to Mr. and Mrs. Jerry Picklesimer of 759 Taylor St. on July 10. Maternal grandparents are Mr. and Mrs. Joan Steele, Sr., of Moulth, and paternal grandparents are Mr. and Mrs. Ishmael Picklesimer of 460 North St.

A daughter, Elizabeth Jane, to Mr. and Mrs. David C. McLaughlin on July 7. Maternal grandparents are Mr. and Mrs. Kenneth Werner of Sumner, Ia., and paternal grandparents are Mrs. Jean McLaughlin of Lighthouse Point, Fla., and Russell McLaughlin of Houghton Lake.

Mr. and Mrs. Paul H. Ledwidge announce the birth of a daughter, Sarah Elizabeth, June 30 at St. Joseph Mercy Hospital, Ann Arbor. Maternal grandparents are Mr. and Mrs. Walter Harris of Chelsea. Paternal grandparents are Mr. and Mrs. John Ledwidge, Joy Rd., Dexter.

The Veterans Administration reported more than 16.4 million persons have received some form of training under GI Bill programs since 1944.

Bicentennial Youth Day Slated Aug. 18

On Wednesday, Aug. 18, Chelsea will hold its Bicentennial Youth Day, beginning at 9:30 a.m. with a field day for 4- to 12-year-olds. This event will last until 11:30 a.m.

According to Suzanne Morrison, Youth Day chairman, organized games have been slated for 7- to 13-year-olds, 1:30 p.m. to 3:30 p.m. The day will culminate with a parade at 6:30 p.m., followed by an ice cream social. For teens, and adults who think young, a dance will be held from 9 p.m. to 11 p.m. The entire community is invited to participate.

Bicentennial Headquarters is in need of volunteers to work at the Youth Day activities. If you are over the age of 13, can spare some time from 9:30 a.m. to 11:30 a.m., and would like to be part of the action, please contact Suzanne Morrison evenings, at 475-7715.

First Lady...

(Continued from page one)
from Betty Koch, and wash and sets from Village Beauty Salon, Laura's Beauty Shop, The Style Shop, House of Orient, and Norma's Beauty Shop.

Be charitable, if you can, in your judgment of others; save severity for your own mistakes.

Let the Army help you with college.

Last year, 90,000 young people like yourself earned college credits in the Army.

They attended classes on post. They studied at nearby colleges and universities. And they took courses through our various correspondence programs. And the Army paid for 75% of their tuition costs.

Our educational benefits are in addition to the job training you'll receive, the salary you'll make, and the travel opportunities you'll have.

If you'd like to find out more about all the educational benefits the Army has to offer, call your local Army Representative.

Call Army
S/Sgt. Nate Griffin
665-3731

Join the people who've joined the Army.

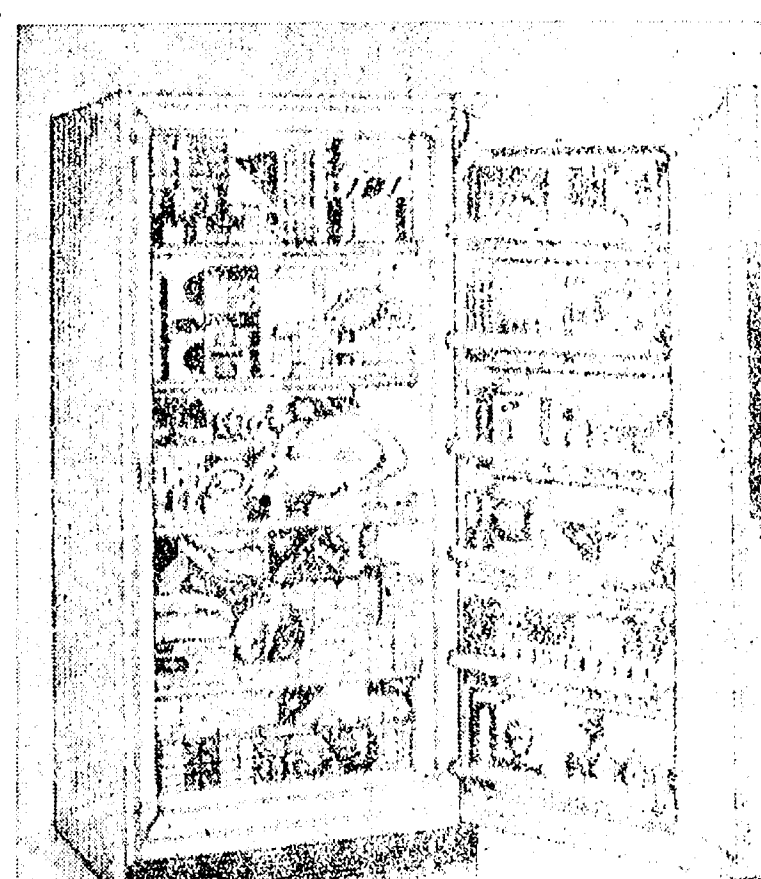
FREEZER SALE

SAVE UP TO
\$60⁰⁰

on
**Amana, General Electric
Revco Freezers**

12 CU. FT. GE UPRIGHT

NOW ONLY **\$249⁹⁵**



290-Lb. Capacity

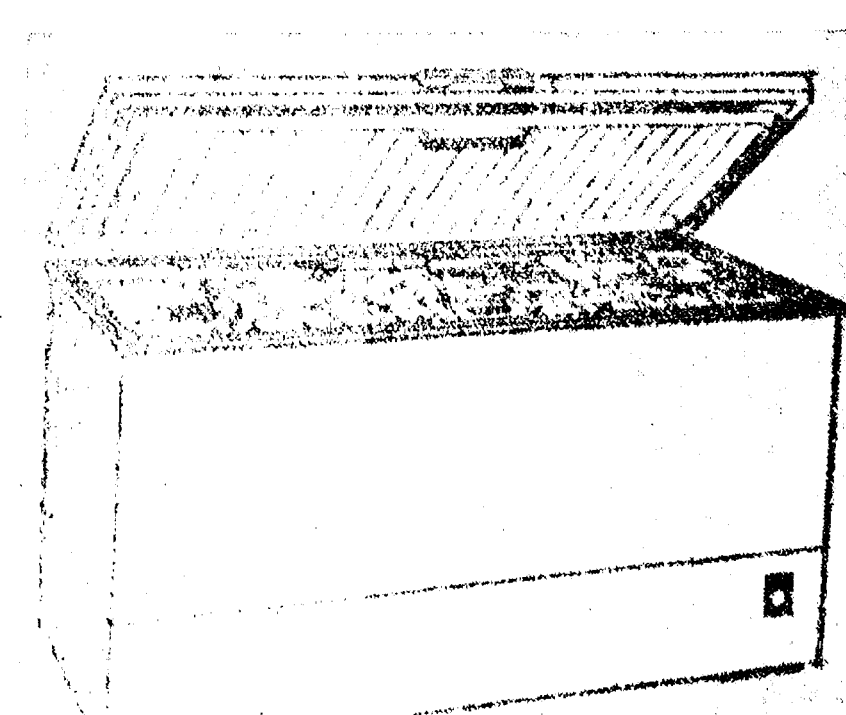
G.E. CHEST FREEZER

\$249⁹⁵

20 Cu. Ft. Capacity

G.E. CHEST FREEZER

\$349⁹⁵



HEYDLAUFF'S

113 North Main St., Chelsea

Phone 475-1221



BULLDOGS T-BALLERS: These players, members of the Bulldogs, may have been challenging their opponents to some real tough competition in their last few games. The Bulldogs are ranked seventh. Seated in the front row, left to right, are Patrick Barkley, Cathy Basso, Bobby Hamel, Patty Wilber, Roger Loucks, and Dennis Palsho. Standing, behind them, are Kirk Eubanks, David Thompson, Tyler Heaven, and David Siegel. Coaches Bonnie Basso and Joe Heaven are the back row.

Recreation Dept. Playground Schedule

Chelsea Recreation Department's summer playground schedule for the week beginning Monday, July 19 is as follows:

Monday, July 19—
9 a.m.-10:30 a.m. — Arts and crafts.
10:30 a.m.—Horseshoes.
10:30 a.m.—Basketball shooting instruction and games.
11:30 a.m.—Free play.

Tuesday, July 20—
9:30 a.m.—Capture the flag.
11 a.m.—Basketball shooting contest.
11:30 a.m.—Bounce ball.
Wednesday, July 21—
9 a.m.-10:30 a.m. — Arts and crafts.
10:30 a.m.—Bounce ball.
11 a.m.—Basketball.

Thursday, July 22—
9 a.m.-10:30 a.m. — 'Almost Anything Goes' practice.
10:30 a.m.—Bounce ball.
11 a.m.—Bounce ball instruction.
Friday, July 23—
9 a.m.-10 a.m.—Arts and crafts.
10 a.m.-12 noon—"Almost Anything Goes" organization.
1 p.m.-3 p.m.—Village "Almost Anything Goes" competition at Chelsea High School.

(Political Advertisement)

VOTE WISELY ON AUG. 3
GET THE BEST AVAILABLE
FAY JOHNSON
FOR SHERIFF

25 Years with the State Police.
Ypsilanti Post Commander for over 5 years.
RESPONSIVE - RESPECTED - RESOURCEFUL
— REPUBLICAN —

Paid for by the Fay Johnson for Sheriff Committee
HOWARD WIKEL, CHAIRMAN JOHN GREEN, TREASURER

School Board Briefs

At a regular Board of Education meeting Monday, July 12 present were President Haselschwardt, Trustees Schafer, Daniels, Hodgson, Tobin and Feeney. Several guests also attended the meeting.

Meeting called to order at 7:45 p.m. by Trustee Haselschwardt. Howard Haselschwardt administered the oath of office to Robert Schafer and Ann E. Feeney.

Trustee Haselschwardt requested that Superintendent Cameron chair the meeting for the election of the office of president of the Board of Education for 1976-77.

Nominations were opened for the office of president of the Board of Education for 1976-77. Trustee Daniels nominated Howard Haselschwardt, supported by Trustee Schafer.

Motion by Tobin, supported by Hodgson, to close the nominations and direct the secretary to cast a unanimous ballot for Howard Haselschwardt for president for 1976-77. All ayes.

Howard Haselschwardt was declared elected president for 1976-77.

Supt. Cameron turned the meeting over to President Haselschwardt.

Nominations were opened for the office of vice-president for 1976-77.

Trustee Schafer nominated Robert Daniels, supported by Feeney. Motion by Tobin, supported by Schafer, to close the nominations and direct the secretary to cast a unanimous ballot for Robert Daniels as vice-president for 1976-77. All ayes.

Robert Daniels was declared elected vice-president for 1976-77. Nominations were opened for the office of secretary for 1976-77. Trustee Hodgson nominated Robert Schafer, supported by Daniels.

Motion by Feeney, supported by Tobin, to close the nominations and direct the secretary to cast a unanimous ballot for Robert Schafer for secretary for 1976-77. All ayes.

Robert Schafer was declared elected secretary for 1976-77.

Nominations were opened for the office of treasurer for 1976-77.

Vice-President Daniels nominated Tom Hodgson, supported by Tobin. Motion by Schafer, supported by Tobin to close the nominations and direct the secretary to cast a unanimous ballot for Tom Hodgson as treasurer for 1976-77. All ayes.

Tom Hodgson was declared elected Treasurer for 1976-77.

Motion by Daniels, supported by Schafer, to hold the regular

board meeting the first Monday of each month and a regular special board meeting the third Monday of each month in the Board of Education Room of the High School Administration building at 8 p.m. All ayes.

Motion by Schafer, supported by Daniels, to authorize the use of the signature plate of the superintendent to sign payroll checks. All ayes.

Motion by Schafer, supported by Tobin, to authorize the use of the signature plates of the president, secretary and treasurer to sign checks for payment of general fund, debt retirement and building and site fund bills and that the vice-president be authorized to act in place of the president if necessary. All ayes.

Motion by Schafer, supported by Feeney, to authorize the treasurer, Mrs. Manzel, the business manager and the superintendent to endorse checks "for deposit only." All ayes.

Motion by Schafer, supported by Feeney to designate the Chelsea State Bank as the depository for school funds. Ayes: Haselschwardt, Schafer, Feeney, Hodgson, Nays: None. Abstain: Daniels, Tobin.

Motion by Schafer, supported by Tobin, to retain the firm of Keusch & Flintoft as general legal counsel for the district for 1976-77. All ayes.

Motion by Tobin, supported by Schafer, to authorize the business manager to invest school funds to the interest of the district. All ayes.

Motion by Schafer, supported by Tobin, to authorize the business manager to participate in co-operative purchasing. All ayes.

Motion by Schafer, supported by Feeney, to sign the contract of Debra T. Solowick for the 1976-77 school year. All ayes.

Motion by Schafer, supported by Hodgson, to accept the resignation of Mrs. Nancy Corcoran, effective immediately. All ayes.

Motion by Tobin, supported by Schafer, to accept the resignation of Mrs. Annabelle Closson, effective immediately. All ayes.

Larry Doll, president of the Class of 1974, reported on the proposed disposition of the balance of the 1974 class funds. The class wishes to give the following amounts: Speech Department, 50 percent of balance, Audio Visual, 50 percent of balance.

Motion by Daniels, supported by Tobin, to waive present board policy and follow the wishes of the class of 1974 and allow the class to donate 50 percent of the balance of their funds to the Speech Department and 50 percent for Audio-Visual materials. All ayes.

The board held a discussion with citizen and teacher representatives regarding the student discipline code.

Motion by Schafer, supported by Hodgson, to instruct the business manager to apply for an election date on the earliest possible date in August. All ayes.

President Haselschwardt called a special meeting for Wednesday, July 14, at 7 p.m. in the Board Room at the high school.

Tutorial assistance is one of the many veterans' benefits available under the GI Bill, the Veterans Administration reported.

Second Section

The Chelsea Standard

Pages 7-14

CHELSEA, MICHIGAN, THURSDAY, JULY 15, 1976



FOR MEDICAL RESEARCH: Assisted by Alex Santiago, Lloyd Bridges presents a donation of \$1,000 to the Retinitis and Pigmentosis Foundation of Harvard at opening ceremonies for his new facility, Lyold Bridges Chevrolet and Traveland Saturday, July 10. The opening day was celebrated with champagne toasts by those in attendance.

Senior Swim Program in Danger

Chelsea's new indoor pool swimming session for Senior Citizens is still receiving very little response from the older members of the community.

Pool director Jim Talman stressed that this swimming session is reserved for anyone over 50 years

Girls Softball Tourny Set For Saturday

Chelsea Education Association will sponsor a girls' softball tournament Saturday, July 17, at the high school field.

The tournament will be for the seven local girls teams. Ribbons will be awarded to both first and second-place finishers.

Play will begin with three games at 10 a.m. Semi-finals will start at 11:45 a.m. with the championship game slated for 1:30 p.m.

Freshman Class To Meet Friday

All Chelsea High school freshmen are asked to attend a class meeting, Friday, July 16, 1 p.m. to 2 p.m. at 176 Orchard St.

Purpose of the meeting is to choose a candidate for Fair Queen and to take care of other business.

of age and does not require participants to be members of any senior citizens organization.

To prevent this weekly swimming period from being cancelled, all Chelsea area residents who qualify for the "senior" category are urged to come to the pool

Thursday, 8:30 p.m., and take part in the special swimming session.

Pool hours for the week beginning July 19 are as follows:

LESSONS—
9 a.m.-3 p.m., Monday through Friday.

8:30 p.m.-9 p.m., Wednesday and Thursday, adult lessons.

OPEN RECREATIONAL SWIMMING:

3 p.m.-5 p.m., Monday through Friday.

7 p.m.-8:30 p.m., Monday, Wednesday, Thursday.

2 p.m.-4 p.m., Saturday and Sunday.

FAMILY SWIMMING—
8:30 p.m.-10 p.m., Monday and Tuesday.

7 p.m.-8:30 p.m., Friday.

HANDICAPPED SWIMMING—
7 p.m.-8:30 p.m., Tuesday.

SENIOR CITIZENS SWIMMING—
8:30 p.m.-10 p.m., Thursday.

TEEN SWIMMING—
8:30 p.m.-10 p.m., Friday.

SPECIAL SALE
1/2 PRICE

Short and Long Sleeve



VAN HEUSEN®
Vanknit Splendor

THE SOFT, SENSUOUS DOUBLE KNIT DRESS SHIRT
So incredibly soft, it's the most handsome, luxuriously comfortable dress shirt ever designed! Supremely flattering...drapes perfectly for a flawless, smooth fit. Wear it again and again...it's got the quality and pleasure that won't wear out. Available in all the latest fashionable solid colors. Machine washable and dryable 100% textured polyester double knit.

Long Sleeve Reg. \$13.00. Short Sleeve Reg. \$12.00

NOW 1/2 OFF

STRIETER'S MEN'S WEAR

"The Place To Go for Brands You Know"

RICK'S MARKET

20490 M-52

"The Store with the Spartan on the Door"

Phone 475-2898

PAULY OF WISCONSIN

AMERICAN CHEESE SLICES

3-Lb. Pkg. **\$3.39**

SPARTAN SANDWICH COOKIES

24-Oz. Pkg. **79¢**

TANG BREAKFAST DRINK

Grape or Orange

18-Oz. Jar **\$1.13**

BORDEN'S

OLD FASHION ICE CREAM
1/2 gal. \$1.29

ECKRICH
REG. OR THICK

SLICED BOLOGNA
\$1.29

1-Lb. Pkg.

MINUTE MAID FROZEN

LEMONADE THIRST QUENCHER

16-Oz. Can **53¢**

SPARTAN FROZEN FRENCH FRIES

1-Lb., 4-Oz. Pkg. **45¢**

GORTON'S FROZEN FISH & CHIPS

1-Lb. Pkg. **95¢**

TUESDAY BAKERY SPECIAL:
WHITE BREAD . Hot from Our Ovens **49¢**

RICK'S HOT BREAD DAILY

Weekdays by 3:30 p.m. Sat. & Sun., by 10:30 a.m.

(QUANTITY RIGHTS RESERVED)

GAUNTLET



The Chelsea Junior Scouts will sponsor the "Gauntlet" on Frontier Day, Aug. 17, at the Chelsea Fairgrounds from 1 p.m. to 5:30 p.m. for children under 12 years old.

In this game the contestants must walk across a beam in the shortest amount of time. While walking across the beam the girls will be trying to knock them off balance with rubber punch balls.

There will be a small entry fee and awards will be given for 1st, 2nd, and 3rd place at the grandstand at 5:30.

Come and try your skill, have fun. You may take home a trophy.

GAUNTLET

LITTLE WANT ADS! BIG PLUSES FOR BIG RESULTS!

JUST PHONE
475-1371

WANT ADS

- YOUNG -

We list and sell lake, country and town properties. Eugene Young, Real Estate & Builder, 878-3792, 11806 Dexter-Pinckney Rd., Pinckney 48169. x341f

CAR & TRUCK LEASING. For details see Lyle Christwell at Palmer Motor Sales, 475-1301. 401f

COMPLETE ALUMINUM SERVICE

Siding - Awnings - Repairs
Gutters - Storm Windows
Remodeling

Free Estimates
Call 475-9209

Camelot Construction
Chelsea, Mich. x121f

ROOMS by day, week or month. Excellent for the single man or retiree. Sylvan Hotel, Chelsea, Ph. 475-2911. x311f

KETO USED CARS

8020 GRAND - DEXTER
426-4535
CARS BOUGHT AND SOLD
x381f

A fine selection of
New and Used Cars
for immediate delivery

Harper Pontiac
Sales & Service
475-1308
Evenings, 475-1608 401f

CARPENTER WORK - Inside or out. Mr. Coburn, 475-2893. 121f

GAR - NETT'S
Flower & Gift Shop
Your Friendly Florist
112 E. Middle St., Chelsea
PHONE 475-1400

Funeral Flowers
Wedding Flowers
Cut Flowers (arranged or boxed)
Potted Flowering Plants
Green Plants - Corsages
WE DELIVER

LOST DOG - Tan, white and black medium-sized mutt. Short hair, wearing flea collar, answers to Oscar. Last seen July 8 in Heim Rd., Grass Lake Rd. area. Five-year-old girl very much wants her best friend back. Call 475-8310. x31f

GARAGE SALE - Saturday, July 17, 9 a.m. Depression glass, antiques and collectibles. Also 1/2 size bed and chest of drawers, both over 100 years old, excellent condition, \$100 ea.; girl's 3-speed bike, \$50. 731 Taylor St., Chelsea. -x5

WANT ADS

WEDDING STATIONERY - Prospective brides are invited to see our complete line of invitations and wedding accessories. The Chelsea Standard, 300 N. Main. Ph. 475-1371. 81f

McCulloch
Portable Generators
Chain Saws
WE SELL, SERVICE,
SHARPEN AND TRADE.
Chelsea Hardware 211f

FOR REAL DOLLAR SAVINGS be sure and see us before you buy any new or used car. Palmer Motor Sales, Inc. Your Ford Dealer for over 60 years. 211f
A NEW HOME for the young executive who enjoys entertaining. Your friends will envy you in this lovely 3-bedroom, 1 1/2-bath ranch home. It features fireplace, barbecue deck, open living, 2-car attached garage, spacious basement for the ping pong and pool playing enthusiast, and many other exciting architectural features. Carefully selected to capture the beauty of the site, 8 miles north of I-94. Chelsea schools. \$45,900. Call WEBER HOMES, 475-2828. "We're Builders." x21f
FOR SALE - Compact circulating gas heater. Good for garage or cottage. Call 475-8407. x21f

STRAWBERRIES

Pick your own.

Bring your own containers. Call for picking days.
Order 30-lb. tins of chilled strawberries. Ready to use or freeze.
\$16.50 whole with sugar
\$16.50 sliced with sugar
\$17.50 whole, no sugar
Order now for pick-up on June 29.
1-94 west to Zeeb Rd. Exit, N. on Zeeb Rd. for 3 miles. Gold Barn on left. Gold Barn open for frozen fruit, jam, and frozen cider.

HURON FARMS

426-3919 x11f

DON'T THROW IT AWAY - Sell it to A&K Mower Service of Chelsea. We buy, sell and repair all types of lawn mowers. We also repair all types of small gas motors; rototillers, chain saws, riding lawn mowers. You call, we haul. Free pick up and delivery. 475-2823. x401f

WANTED - Standing hay. Ph. 475-2771. 371f
EVANS JANITORIAL SERVICE has part-time positions available for the Chelsea area. Call 971-6263 after 6 p.m. 31f
VOTE - Primary Election, Aug. 3. Betty Koch, Lima Township Treasurer. x7
HELP WANTED - Mature woman to work at snack bar, Stuckey's Pecan Shop, 475-7334. 5

FOR SALE
SMALL RESTAURANT with established luncheon trade in the Village of Dexter. Excellent opportunity for expansion and growth. For details call
KATHY STIVERS
Eves.: 426-2235
Waggoner Real Estate
426-8387 x31f
FOR SALE - 3-wheel dune cycle, \$100. Phone 475-2761. -c6

WANT ADS

CERAMIC TILE - Reasonable prices. Excellent work. Ph. 426-2260. x241f

BRICK MASON - Brick work, block work, fireplaces, chimney repairs, homes and additions. Ph. 475-2384. x444f

PAINTING - Exterior and interior. Quality workmanship, free estimates, references, reasonable rates. Ph. (517) 851-7055. x481f

SEE US for transit mixed concrete. Klumpf Bros. Gravel Co., Phone Chelsea 475-2530, 4920 Loveland Rd., Grass Lake, Mich. x401f

TRAVEL TRAILERS - 13-ft. and up; 10x55 ft. trailers. John R. Jones Trailer Sales, Gregory, Mich. Phone 498-2215. x41f

NOW TAKING ORDERS for fresh fruit. Direct from Western Michigan. Cleaned and ready to eat. Raspberries, blueberries, blackberries, peaches, apricots, apples, rhubarb, currants, melon balls and fruit cocktail. Also pineapple and asparagus. Orders must be in by July 18th. Phone 428-7600. Manchester Locker Plant, Manchester, Mich. x5

CUSTOM SEWING and alterations. Ph. after 2:30 p.m., 475-8745. 301f

ROOFING SPECIALIST - All types of roof repairs, homes, barns, commercial. Insurance repairs. Asphalt shingles, hot built-up roofing, cedar-shake tile-asbestos. Awnings and porch enclosures. Call Joe Hayes for free estimates. Manchester, 428-8820. x221f

BUILDING LOT - 5 acres. \$14,000. Terms. Ph. 475-1743. x51f

WANTED - Hauling jobs, junk wood, almost anything. Call 475-8824. 301f

FOR SALE - Justin Lake, 2-acre building site, with lake privileges. Call 475-9209. x301f

NEED A ROOF? Call Toth Building & Remodeling, (313) 488-2178. 411f

WANTED TO RENT - House in Chelsea area for responsible engineer and family. Ph. 971-4384. -5

FOR SALE - '71 Chevy, 4-door, p.s., p.b., a.c., low mileage, very good condition. Ph. 475-2876 after 5 p.m. 41f

R.L. BAUER
Builders
LICENSED AND INSURED
Custom Building
Houses - Garages
Pole Barns
Roofing Siding
Concrete Work
FREE ESTIMATES
Call 475-1218 31f

OPEN HOUSE
Sunday, July 18
18993 Doyle Road,
Gregory, Michigan
Between M-106 and Unadilla Road
BRAND NEW 3-bedroom ranch home, beautiful kitchen adjoining family room with redwood deck, 1 1/2 baths, additional space in full walkout basement, attached garage, plus 4 acres to landscape. Gregory schools. \$45,000.

Waterloo Realty
475-8674
Eves: Paul Erickson 475-1748
Jerry Gondek 475-8285
Carol Lakatos 475-7129
Sue Lowe 475-2377 x5
FOR SALE - Furniture. Playpen with pad, crib with spring, countertop dishwasher, sewing machine cabinet, waffle iron, corner china cabinet, captain's chair (unfurnished), 7-place setting sterling silverware, few other items. Call 475-1966. x5
GARAGE SALE - 2180 Saline Rd., Ann Arbor. Antique Victorian table, chairs and lamp, spinet desk, women's coats, mirrors, frames, Spanish shawl, many more misc. items. Friday thru Sunday, July 16-18. x5
FOR SALE - Pinto horses; mare and gelding, complete with western tack and stable gear. Will pull in harness. Reasonable. Call 475-1793 after 6 p.m. -5
MOVING SALE - Old bottles, household items, furniture, glassware, etc. You name it, we've got it. Friday and Saturday, July 16-17, 9 to 5. 313 E. Middle, Chelsea. -x5

country beautiful
-Quality Materials
-Professional Workmanship
-Country-Style Beauty
"Your Lot or Ours"
We Do Everything For You From Financing To At Price
You Expected To Pay
Appointment Anytime

Waterloo Realty
Eves: Paul Erickson 475-1748
Jerry Gondek 475-8285
FOR SALE - Sewing machine, blender, mixer, vacuum, toaster, electric skillet with broiler, dishes, stainless tableware, glasses, coats, sizes 10-12-26, many misc. articles. 138 E. Middle St. Basement entrance. 475-7437. x5
1969 FORD F-100. Flare side, short box, reconditioned. Call 475-2597 after 6 p.m. x5
FOR SALE - 1973 Corsair travel trailer, 26-ft. 5th wheel, hook-ups included. Ph. 475-8139 after 5. x5
COUNTRY YARD & Garage Sale - 4-family. Antiques, kids' clothing, camping equipment, furniture, dishes, misc. 851 S. Freer Rd., Chelsea. Fri., July 16 and Sat., July 17, 9 to 5. x5
FOR SALE - Magic Chef gas stove, \$100. Ph. 475-2291. x5

WANT ADS

SEAMLESS ALUMINUM eaves, troughs, roofing, siding, and carpentry work of all kinds. Experienced installers. All work guaranteed. For free estimate, call R. D. Kleinschmidt Co., 428-8836. x311f

SONY STR 7055 STEREO receiver, 35 watts, RMS per channel. \$450 new, 1 yr. old, asking \$250. Ph. Ypsi. 434-0589. x501f

10 ACRES - Gaylord-Mancelona area. Heavily wooded, hardwoods, excellent deer area, close to thousands of acres of State Forest, secluded, camping, hunting, fishing, \$4,995 with \$500 down, \$50 monthly, 8% land contract. Call 616-258-4873 days, 616-258-5747 evenings. Write Wildwood Land Company, R. No. 1, M-72, Kalkaska, Mich. 49846. x5

TOY DEMONSTRATORS - Invest your time, not your money. Earn sample kit free, plus 25% commission. No delivering. No collecting. Assembling Home Toy Parties. Call 475-1543. x7

FREE CAT to a good home. Sprayed and declawed. Call 475-1093. x5

AKC champion sired German Shepherd puppies. Show quality or pets. Mrs. Carr, 663-2567. x6

REAL ESTATE

CABIN IN CHIPPEWA FOREST. Mecosta county, with access to Diamond Lake. Pine and birch trees surround this little retreat with one bedroom, full basement, 3-pc. bath and floor furnace. \$5,500. Land contract possible with \$2,000 down.

LAKEFRONT - Furnished summer cottage on Big Portage Lake (Jackson county) has one bedroom, large living room, 1/2 bath, kitchen, enclosed porch, excellent dock, on leased land. \$9,900. Land contract possible.

COUNTRY HOME on 9.8 acres with scattered woods. Kitchen and living room have knotty pine paneling, 2 large bedrooms up. \$24,500 with land contract possible. 20 min. from Chelsea.

SMALL HOME with full basement, one-car detached garage, mini orchard on 12 acres on a pretty country road 7 miles from town. Chelsea schools. \$40,000.

PINCKNEY AREA - Rush Lake lot with large private park access. Very buildable. \$6,500. Land contract possible.

9.7 ACRES, FENCED, large pole barn, corn crib and smaller buildings. Wide frontage on blacktop road, north of I-94 in Waterloo township. Grass Lake schools.

SECLUDED BUILDING SITE with 13 rolling acres. Includes 24'x48' basement walls ready for capping, natural pond, some trees, new 4" well, approved septic system and electric on property. 5 1/2 miles to Chelsea. \$28,000.

600 FT. LAKE FRONTAGE plus 100 acres which includes woods, hills and marsh. river winds through property. A perfect hideaway south of Jackson. 40 min. from Chelsea. \$750 per acre.

WATERLOO REALTY
355 Clear Lake
JOANN WARYWODA, BROKER
Phone 475-8674

Evenings: Jerry Gondek 475-8285
Paul Erickson 475-1748
Carol Lakatos 475-7129
Sue Lowe 475-2377 x51f

EXTRA NICE SINGER sewing machine, deluxe model. Best offer. Ph. 426-2368. x5

TIMOTHY HAY from the field at 60 cents per bale. Has some clover 2 miles south of Chelsea. Ph. 475-8334. x5

GARAGE & ANTIQUE SALE Fri. day and Saturday, July 16 and 17, starting 10 a.m. 405 Wilkinson, Chelsea. -x5

FOR SALE at North Lake - 3 bedroom ranch, 2 baths, attached 2-car garage, walk-out basement, dining room, glassed-in porch and large deck, lake easement in front. \$49,000. Ph. 475-2832 eves., 761-4922 days. -x5

OPEN HOUSE

Sunday, July 18
7435 Mt. Hope Road
Exit 150 (Mt. Hope Rd.) off I-94 then 3.5 miles north.

5-BEDROOM brick home, large country kitchen with space for Franklin fireplace, two enclosed porches, two-car garage, shrubs, trees, good garden on 7 acres. Grass Lake schools.

Waterloo Realty

Eves: Paul Erickson 475-1748
Jerry Gondek 475-8285

FOR SALE - Sewing machine, blender, mixer, vacuum, toaster, electric skillet with broiler, dishes, stainless tableware, glasses, coats, sizes 10-12-26, many misc. articles. 138 E. Middle St. Basement entrance. 475-7437. x5

1969 FORD F-100. Flare side, short box, reconditioned. Call 475-2597 after 6 p.m. x5

FOR SALE - 1973 Corsair travel trailer, 26-ft. 5th wheel, hook-ups included. Ph. 475-8139 after 5. x5

COUNTRY YARD & Garage Sale - 4-family. Antiques, kids' clothing, camping equipment, furniture, dishes, misc. 851 S. Freer Rd., Chelsea. Fri., July 16 and Sat., July 17, 9 to 5. x5

BEEF - Locally corn fed. By quarter or side. Ready for your freezer. Ph. 426-4022 after 6 p.m. x421f

CUSTOM BUILDING LICENSED & INSURED FREE ESTIMATES TOTAL CONSTRUCTION SERVICES

-Homes, factories, warehouses
-Pole buildings
-Garages
-Remodeling - Additions
-Aluminum Siding
-Roofing
-Masonry Work, fireplaces, block work, patios, etc.

SLOCUM CONTRACTORS & BUILDERS

Serving Washtenaw County
For Over 20 years
20700 OLD US-12
CHELSEA
Phone 475-8321 or 475-7611 21f

CHELSEA - 3-bedroom ranch, family room, fireplace, full basement, carport, excellent area. 1 1/2 baths. \$41,900. Ph. 475-1254. x31f

MARVIN SCHILLER for Lima township treasurer. Vote Aug. 3 primary. x7

1974 LINCOLN Town Coupe, low mileage, good condition. \$4,500. Call 475-8786. x5

FOR RENT - Unfurnished apt. Stove, refrigerator, heat furnished. No pets, for married couple only. Call 475-8469. x41f

FOR SALE - German pointers. AKC. Call 662-5744 or 769-4887. x5

VOTE - Primary Election, Aug. 3. Betty Koch, Lima Township Treasurer. x7

TRAILER SPACE available in the Chelsea Mobile Home Park. Close to shopping, has sewer and city water. Ph. 1-474-8552. x7

VACANT LOT, 160'x60', Scio township, Evergreen subdivision. Ph. 994-6194. x521f

FOR SALE - 15 1/2 ft. fiberglass ski-boat. 50 h.p., V-4, Evinrude motor, canvas cover, and boat trailer. Call 475-8469. x31f

VOTE - Primary Election, Aug. 3. Betty Koch, Lima Township Treasurer. x7

FOR SALE - Beautiful sofa and one matching chair. Good condition. \$250. Call 475-7601. x6

REAL ESTATE

HAVE YOU HEARD about our latest listing? It's a beautiful 80-acre farm on Austin Road in Manchester. 4 bedrooms, 2 baths, extra large kitchen, basement and 2 storage sheds along with a 30'x60' barn. \$115,000.

WE'VE JUST LISTED this brightly decorated home in Chelsea. The upstairs is currently being rented but this home could easily be made into a large 4-bedroom home. 2 baths, family room, full basement and a 1-car garage. The lovely garden spot and shade trees really make this cool and breezy 89'x260' lot. \$39,500.

ANXIOUS OWNER wants to sell this lovely 10-acre parcel on M. Aute Rd. in the Grass Lake school area. 8 acres of woods and partly fenced. Beautiful building sites. Enormous savings at \$9,800.

PRIME SITE for development on this 7.22 heavy industrial lot. 3 miles west of Chelsea 1/4 mile to I-94 exit. Chelsea school area. -5

OFFICE: 428-8046
Eves and week-ends:
James Mann 428-8074
Ellis Pratt 428-8552

Spear & Assoc., Inc.
REALTORS
122 W. Main St., Manchester
Office Phone 428-8046 6

FOR SALE - 2,000-bushel wire corn crib, with top. Like new, first \$300. 14701 Harr Rd. off Waterloo-Munith Rd., Waterloo. x5

3-FAMILY YARD SALE - Sat., July 17 from 9 to 5. 142 Van Buren, Chelsea. -5

ODD JOBS WANTED - Reliable 21-year-old. Call Steve at 475-8220. -x6

MAUSOLEUMS * MONUMENTS
BRONZE TABLETS * MARKERS
BECKER MEMORIALS
6033 Jackson Road
ANN ARBOR, MICHIGAN

WANT ADS

FOR SALE - 2 couches, good condition. One is wooden with foam cushions. Very reasonably priced. Ph. 475-7161.

THORNTON 475-8628

NEW LISTING! 3-bedroom ranch home with full basement on 1 acre. Excellent country home! \$39,500.

VILLAGE LOCATION - Over 1,400 sq. ft. of living area including 3 bedrooms and dining room. Hardwood floors and plastered walls too! Only \$36,500.

CHOICE COUNTRY HOME - 4 bedroom brick ranch with walk-out basement. 3 1/2 baths. Adjacent to beautiful state land. On 10 acres.

QUALITY HOME - Plaster walls, custom cupboards, fireplace and basement. On 5 wooded acres.

BEAUTIFUL COLONIAL - Central air will keep you cool while you enjoy this spacious 4-bedroom home. Including 2 1/2 baths, family room and basement. Chelsea's finest subdivision.

CAVANAUGH LAKE - Get out your skis and enjoy living in this 2-bedroom home with lake frontage. Good fishing and swimming too! Only \$25,000.

VACANT LAND & BUILDING SITES

1 ACRE - Beautiful view and frontage on North Lake channel.

9 ACRES - Make two sites out of this parcel adjacent to state land. Only \$31,000.

PRIME BUILDING SITES in the Village. Assessments in and paid. Excellent at \$8,600-\$10,300.

ROBERT H. THORNTON JR., P.C. REALTOR

CHELSEA 475-8628
Dolly Alber 475-2801
Helen Lancaster 475-1198
Peg Hamilton 475-1870
Mark McKernan 475-8424
Lang Ramsay 475-8133 5

OPEN HOUSE

13453 Riker Rd.
Sunday, July 18, 2-5 p.m.

RIKER LAKE - Distinctive 4-bedroom contemporary of glass and cedar, architecturally designed with a magnificent view and 160-ft. lake frontage. Some of the many features include 3 baths, 2 fireplaces, dining room, exposed lower level with family room, workshop, wrap-around deck. Secluded, wooded area. Chelsea schools. \$98,000. Call S. D. Casey Jones at 761-1611, office 994-4500.

Directions: N. Territorial to right on Riker Rd. and follow Spear signs.

Spear & Associates

REALTORS
1935 Pauline, Ann Arbor x5

WANT ADS

GARAGE SALE - July 16-17. Cavanaugh Lake, 1548 Ridge Rd. 9 to 5. Pkcs. 2 to 3 Saturday. Dresser, Hamilton, oak lamp, 4 b.c. chairs and misc. items. Several families. x5

FOR SALE - 2 boat motors, 7.5 hp. Evinrude and 3.5 Johnson. Good condition. Reasonably priced. 474-1181. x5

LOST - White and brown small dog. Name Tom. Age on collar Edward. Ph. 475-1787. x5

RELIABLE PERSON wants jobs mowing lawns, washing cars, yardwork and other odd jobs. Call 475-7015. x5

RED RASPBERRIES - Place order by calling 475-7118, persistent. x5

BABY SITTER WANTED in my home for month of August. Ph. 475-7312 for details. x5

WANT ADS


MAKE beaten down carpet nap at doorway bright and fluffy again with Blue Lustre. Chelsea Hardware. x5

FOR SALE - Dexter area. 3 acres, custom built, 3-bedroom brick ranch. Too many extras to list. Moving out of state. A steal at \$89,900. Ph. 426-2280. x8

SAILBOAT FOR SALE - 11-ft. Whirlwind. Less than 2 years old. \$155. C. Wood, 475-8217 or 475-2033. -5

GARAGE SALE - Clothing, antiques, and miscellaneous. Come browse. Sat., Sun. July 17-18. 201 Buchanan, Chelsea. Alan Woods. x5

FUND-RAISING PARTY - By the Broderick for Sheriff party. Sunday, July 18, at the Gingham Inn, 2789 Washtenaw Ave., Ypsilanti, 2 p.m. to 8 p.m., \$5 per person donation at the door. x5



TODAY'S THOUGHT

By LOUIS BURGHARDT

An idealist is often thought to be a visionary dreamer. This is sometimes true but certainly not always. Here are two examples...

Our founding fathers were idealists. Their idealism fathered the American Revolution. They were way ahead of their times when they created the foundation on which our great country was built. The liberties we enjoy today are directly traceable to the idealists of two centuries ago...

The greatest and most important idealist of all times was born almost 2,000 years ago. He expounded ideas which became the corner stone on which civilization is based.

Both of these examples indicate an important point to remember. A genuine idealist is one who can be judged by his actions, not by mere ideas or ideals that lack action.

BURGHARDT FUNERAL HOME, 214 East Middle St., Chelsea, Mich. Phone 475-1551.

SPECIALS

ECKRICH PICKLE, VEAL, MACARONI & CHEESE

Cold Meat lb. \$1.15

16-OZ. NO-RETURN BOTTLES

7-Up 8 pac \$1.23

200-CT. PKG.

Kleenex 47c

ASSORTED FLAVORS

Jell-O 3 for 55c

3-LB. BAG U. S. NO. 1

Yellow Onions 37c

KUSTERER'S

FOOD MARKET

DIAL 475-2721 WE DELIVER


CSB

MEMBER F.D.I.C.

CHELSEA STATE BANK

Home or away from home, your Chelsea State Bank checkbook is your willing helpmate in meeting your bills, assisting in making purchases and maintaining a record of payments made. Open a Chelsea State Bank checking account today and enjoy checking free of charges when you maintain the Happy Balance of \$300! Senior friends 62 and older enjoy free Chelsea State Bank checking always! Take a Chelsea State Bank checkbook with you on vacation. Relax. Enjoy yourself.

Even on vacation, you can pay your bills by check.



Attention Farm Owners

BICENTENNIAL SPECIAL for equipment storage, utility sheds, barns or warehouses. Middle pole building to suit your needs. Any size.

FREE ESTIMATES

SLOCUM CONTRACTORS & BUILDERS

Ph. 475-8321 or 475-7611

Waterloo Realty

country beautiful

-Quality Materials
-Professional Workmanship
-Country-Style Beauty
"Your Lot or Ours"

We Do Everything For You From Financing To At Price You Expected To Pay Appointment Anytime



Over 20 Years Experience
Call 475-2828
12290 Jackson Rd., Chelsea

So hey, will we see you at Mad Dog's Big 8.

Get your tickets right now, there may be a \$50 door prize and how.

RIDDLE: What was the greeting, for Mad's first great meeting.

Let's party this year, with a special bicentennial cheer.

THANK YOU

Chelsea Bell Bottom Belles would like to thank the following businesses for making the Funny Bowling Contest possible on Saturday, June 26:

Garrett's	Winans	Kusterer's
Vogel's	Chelsea Drug	Dancer's
Foster's	Gambles	Village Books
		Laura's Beauty Shop

SOUTHERN BOY MANOR MOTEL

Efficiency Units - By Day, Week, or Month

13190 M-52

PHONE (517) 851-4213

(2 miles south of Stockbridge)

Advertise Your Auction The Standard!

We Have

OPEN BOWLING EVERY DAY

From 11 a.m. to 11 p.m.

Enjoy Bowling in the Area's Most Modern Air Conditioned Center

CHELSEA LANES, Inc.

1180 M-52

Ph. 475-8141

+ Services in Our Churches +**CONGREGATIONAL CHURCH**

(United Church of Christ)

The Rev. Carl Schwarm, Pastor

Sunday, July 18—

9:30 a.m.—Worship. No choir.

OUR SAVIOR LUTHERAN CHURCH

1515 S. Main, Chelsea

The Rev. William H. Keller, Pastor

Friday, July 16—

7:00 p.m.—Youth-adult softball.

Friday, July 16 to Sunday, July 18—

Youth Expto, Concordia, Ann Arbor.

Sunday, July 18—

9:00 a.m.—Worship service.

Holy Communion.

Monday, July 19—

Mark 10:35-45.

Tuesday, July 20 to Thursday, July 22—

Lutheran Women's Missionary League Convention at Concordia College, Ann Arbor.

ST. MARY CATHOLIC CHURCH

St. Mary, Fr. David Philip Dupuis, Pastor

Mass Schedule:

Every Saturday—

4:00-5:00 p.m.—Confessions.

7:00 p.m.—Mass.

Immediately after 7 p.m. Mass—

Confession.

Every Sunday—

Worship schedule:

7:00, 9:00, 11:00 a.m.—Mass.

SALEM GROVE UNITED METHODIST CHURCH

3320 Nottan Rd.

The Rev. Gerald R. Parker, Pastor

Every Sunday—

9:30 a.m.—Sunday school.

10:30 a.m.—Worship service.

Sunday, July 18—11:00 a.m.—Out-

door church service at home of

Bob and Chris Rentschler, 15823

Waterloo Rd. No Sunday school.

Port-luck dinner and games for

children following church service.

The Waterloo church is invited to

join in the special service and

festivities which follow.

BAHA'I FIRESIDE

Every Thursday—

8:00 p.m.—At the home of Toby

Peterson, 705 S. Main St. Anyone

wishing to learn about the Baha'i

faith is welcome.

NORTH LAKE UNITED METHODIST CHURCH

The Rev. David Stiles, Pastor

Every Sunday—

8:30 and 10:00 a.m.—Worship

service.

FIRST UNITED PRESBYTERIAN CHURCH

Unadilla

The Rev. T. H. Liang, Pastor

Every Sunday—

9:45 a.m.—Sunday school.

11:00 a.m.—Worship service.

LOSE UGLY FAT

Start losing weight today or money

back. MONADEX is a tiny tablet

that helps you burn off excess

fat. It's safe—no pills. Contains

no dangerous drugs and will not

make you nervous. No strenuous

exercise. Change your life... start

today. MONADEX cost \$2.95 for

a 20 day supply. Large economy

size is \$5.50. Also try AQUATABS:

they work gently to help you lose

water-bloat. AQUATABS cost \$3.00. Both

substantiated and sold by:

CHELSEA DRUG STORE

101 N. Main St. - Mail Orders Filled.

ZION LUTHERAN CHURCH

Corner of Fletcher, Waters Rds.

The Rev. John R. Morris, Pastor

Friday, July 16—

6:30 p.m.—Softball.

Saturday, July 17—

Social Reminder—Each parish

family furnishes one light and

one dark cake.

Sunday, July 18—

9:00 a.m.—Sunday school.

10:15 a.m.—Worship.

Luther League picnic-swim out-

ing at Plum's cottage.

Monday, July 19—

Fish pond items due.

7:00 p.m.—Social set-up, help-

ers needed.

8:30 p.m.—Softball.

Tuesday, July 20—

5:00 p.m.—Zion's social. Table

flowers needed.

Wednesday, July 21—

Social clean-up.

Thursday, July 22—

7:30 p.m.—2nd Mile Scope Bi-

ble Study at home of Cheryl

Schoenberg.

ST. JOHN'S EVANGELICAL AND REFORMED CHURCH

(United Church of Christ)

Francisco

The Rev. Virgil King, Pastor.

Every Sunday—

10:30 a.m.—Church services.

ST. THOMAS EVANGELICAL LUTHERAN CHURCH

Ellsworth and Haab Rds.

The Rev. Jerome Dykstra, Pastor

Sunday, July 18—

9:30 a.m.—Sunday school and

Bible class.

10:45 a.m.—Worship service.

FIRST ASSEMBLY OF GOD

The Rev. Richard Coury, Pastor

Every Sunday—

9:45 a.m.—Sunday school.

11:00 a.m.—Worship service.

6:00 p.m.—Evening worship.

Every Wednesday—

7:00 p.m.—Christ's Ambassadors,

Missionettes. Bible meditation and

prayer.

WATERLOO VILLAGE UNITED METHODIST CHURCH

818 Washington St.

The Rev. Glenn Kleiberg, Pastor

Every Sunday—

10:00 a.m.—Sunday school.

11:15 a.m.—Worship service.

FIRST UNITED METHODIST

Parks and Territorial Rds.

The Rev. Glenn Kleiberg, Pastor

Every Sunday—

9:15 a.m.—Morning worship.

10:00 a.m.—Sunday school.

ST. BARNABAS EPISCOPAL CHURCH

2650 Old US-12

The Rev. Fr. Jerrold F. Beaumont, B.S.P.

Every Sunday—

10:00 a.m.—Holy Communion

first, third and fifth Sundays, and

8 p.m. every Wednesday.

10:00 a.m.—Morning prayer. Se-

cond and fourth Sundays. Church

school and nursery every Sunday.

Every Wednesday—

9:00 p.m.—Study and discussion

groups.

First Wednesday of every month

Bishop's Committee.

Third Thursday of every month—

Episcopal church women.

ST. JOHN'S UNITED CHURCH OF CHRIST

Rogers Corners

Every Sunday—

10:30 a.m.—Worship service.

FIRST CHURCH OF CHRIST SCIENTIST

1883 Washtenaw Ave., Ann Arbor

Every Sunday—

10:30 a.m.—Sunday school, morn-

ing service.

BETHEL EVANGELICAL AND REFORMED CHURCH

(United Church of Christ)

Freedom Township

The Rev. Roman A. Reineck, Pastor

Every Sunday—

10:00 a.m.—Worship service.

GREGORY BAPTIST CHURCH

The Rev. Paul White, Pastor

Every Sunday—

8:45 a.m.—Sunday school.

11:00 a.m.—Morning worship.

8:00 p.m.—Young people.

7:00 p.m.—Evening worship.

7:30 p.m.—Thursday mid-week

worship service.

IMMANUEL BIBLE CHURCH

145 E. Summit St.

The Rev. LeRoy Johnson, Pastor

Every Sunday—

9:45 a.m.—Sunday school, nur-

sery provided.

11:00 a.m.—Morning worship,

nursery provided.

6:00 p.m.—Evening worship.

Every Wednesday—

7:00 p.m.—Family hour, prayer

meeting, and Bible study.

CHURCH OF CHRIST

1381 Old US-12, East

Evangelist John M. Hamilton

Every Sunday—

10:00 a.m.—Church school.

11:00 a.m.—Worship service.

Nursery will be available.

6:00 p.m.—Worship service.

Every Wednesday—

7:30 p.m.—Bible study.

CHELSEA BAPTIST CHURCH

377 Wilkinson St.

The Rev. James Stacey, Pastor

Every Sunday—

9:45 a.m.—Sunday school for the

whole family.

11:00 a.m.—Morning worship

service and children's church.

7:00 p.m.—Evening service, in-

formal singing, sharing, study and

discussion. (Nursery care provided

for all services.)

Home Bible Studies each week

in the homes of the leaders.

Teen Ministry, Sunday at 8 p.m.

and study groups during the week.

CHURCH OF JESUS CHRIST OF LATTER-DAY SAINTS

Meetings at

St. Barnabas Episcopal Church

20500 Old US-12

Every Sunday—

11:00 a.m.—Priesthood meeting.

12:30 p.m.—Sunday school.

CHELSEA GLASS WORKS

WORKMANSHIP AND MATERIALS FULLY GUARANTEED.

Open Daily 8 a.m. to 5 p.m.; Sat., 8 a.m. to 1 p.m.

140 W. Middle, Chelsea Phone (313) 475-8667

WE REPAIR AND REPLACE!

★ STORE FRONTS	★ MIRRORS
★ FURNITURE TOPS	★ PATIO DOORS
★ SHOWER DOORS	★ TUB ENCLOSURES
★ THERMOPANES	
★ AUTO GLASS - Including Windshields	

Free Pick-up and delivery on auto work.

Storm Door & Window Reglazing & Screens

COMMERCIAL BUILDINGS OR RESIDENTIAL

PROMPT SERVICE REASONABLE PRICES



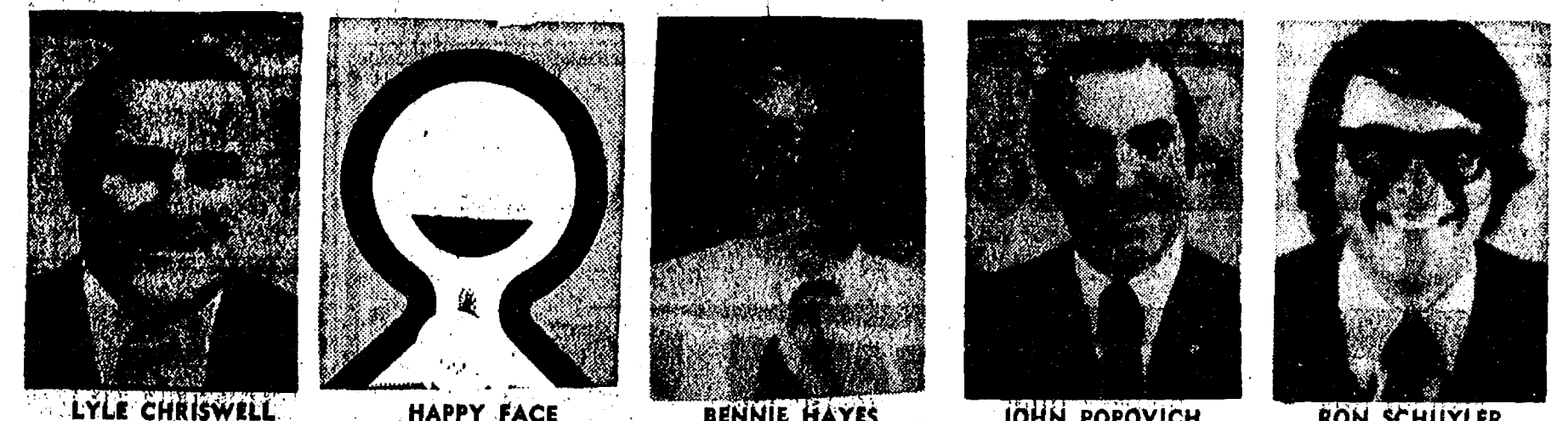
FOR PROFIT

Feed Formulas Tested, Proved To Get Results

Extra proteins, vitamins and minerals in proper balance, scientifically blended, make our feeds real profit producers for you.

Farmers' Supply Co.

Phone GR 5-5511

13th ANNUAL**PICK-UP SALE**

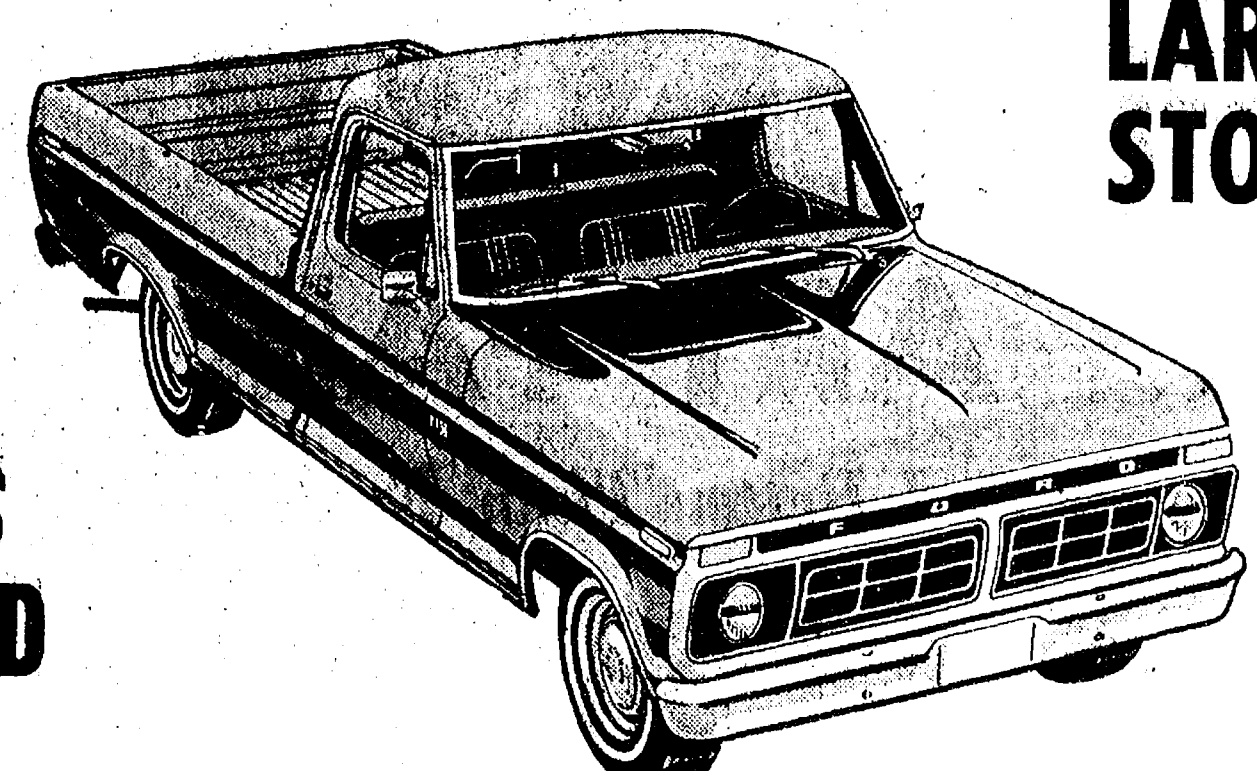
LYLE CHRISWELL

HAPPY FACE

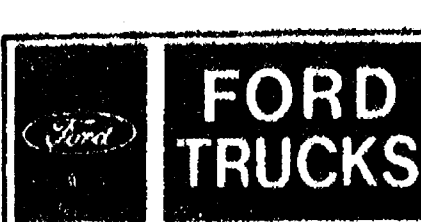
BENNIE HAYES

JOHN POPOVICH

RON SCHUYLER

LARGE STOCK**ALL PRICES REDUCED****ONLY \$3176⁰⁰**

For a Brand New 1976 Ford 1/2-ton Pick-Up with fresh air heater, gauges, heavy duty rear springs, chrome front bumper, bright metal grille, foam cushion seat, freight and delivery charges. (Does not include Sales Tax and License.)

The Happyface Place®
We're in business to make you smile**PALMER**

CHELSEA

SINCE APRIL 1912

(313) 475-1301

Open Monday, Tuesday, Wednesday, Thursday Till 9:00 p.m.; Friday Till 6:00 p.m.; Saturday Till 4:00 p.m.

AUCTION SATURDAY, JULY 17

Commencing at 10 a.m.

In order to settle the estate of the late Iva M. Taylor, I will sell at public auction the following described personal property in Dansville on M-36, second house east of main 4 corners, "The Octagon House."

FURNITURE

Silverstone Colored TV.

6 living room chairs.

Two 3-piece bedroom suites.

Dinette set.

Several kitchen cupboards.

3 electric stoves.

5 sweepers.

Humidifier.

Feather ticks.

2 ironing boards.

Davenport and chair.

Electric mixer.

Washing machine.

Cord table and 4 chairs.

Coffee table.

Cooking utensils.

Quantity of dishes.

Electric clock.

Silverware.

Writing desk.

Clothes closet.

Davenport.

Chest of drawers.

4 chairs.

Magazine rack.

3 electric refrigerators.

Dinette set, 2 chairs.

3 stands.

Portable TV.

3 electric table lamps.

Metal bed.

Clothes dryer.

3 lawn chairs.

6 straight chairs.

Radio.

Portable sewing machine.

Electric fan.

Set of dishes to serve six.

Set of silverware.

Sunbeam floor polisher.

MISCELLANEOUS

Electric chicken waterer.

Rototiller.

Motor and grinder.

New minnow net.

30-ft. extension ladder.

Large aluminum ladder.

Garden cultivator.

2 portable clothes lines.

Tree pruner, new.

Tool chest.

Several other articles too numerous to mention.

TERMS: Cash day of sale. Not responsible for accidents or items after sold.

IVA M. TAYLORESTATE

LAWTON CLICKNER, ADMINISTRATOR

Wanda Wilcox, Clerk

Lee and Louise Fair

Waterloo Celebrates Bicentennial

12 The Chelsea Standard, Thursday, July 15, 1976

Waterloo celebrated the Bicentennial over the past week-end with games for all ages, a parade, street dance, and community picnic.

Starting Friday afternoon, there were bubblegum blowing contests, a croquet saw competition, balloon busting trials, and a softball game. The Waterloo Lilies went down to a wet defeat at the hands of the Wild Woolly Lambs by a score of 11-5.

The festivities got off to a grand start Saturday with a parade that circled the pond. Led by the Chelsea and Dexter VFW

Color Guards and the American Legion, it featured the prize-winning Waterloo float, many other floats, horsemen's groups, tractors of all ages and sizes, clowns, antique and classic cars, Smokey the Bear, a minute-man, an Indian maiden, a couple of high-wheeled bicycles, a motorcycle group, and the Waterloo Band.

More contests took place with spike driving skills displayed by all ages and both sexes. A new mascot, namely a young goat, was presented to the Wild Woolly

Lambs after the death of their old one.

Chelsea made up a caravan to visit the celebration. They gave Waterloo Sodbusters a bath during the water sports on the pond. A plaque was presented to Chelsea for winning the water sports, to be displayed in the Chelsea Fair Building. Some contestants even visited the floating chicken coop to collect the eggs.

That evening, a street dance was held, featuring Garry Klink and the Sodbusters. There were dances for all ages, including square dances.

To climax the celebration, a community picnic was held Sunday afternoon followed by a softball game. The Lil Sodbusters took the rowdyism out of the Rogers Rowdy Rangers with a close 10-9 victory. Ice cream was then served to all the players and a souvenir license plate awarded to all participants in the game.

Among the more than 100 units in parade: Waterloo Float, County Liners Farm Bureau float, Chelsea Float, Royal Rural Roosters and Rooters float, Howard Whitakers Farm float, Lil Sodbusters and Lilletes float, Wild Woolly Lambs Funeral Cortege for Mascot, Chelsea Fire Truck, Packard's Fire Truck and Marshall Street Fire Brigade, Caskey's Hearse from Stockbridge Waterloo Band, Hanson's Motorcycle Group, many horse groups, Bohne's Bullocks and Wagon, Conestoga Wagon, Minuteman, Indian Maiden, Smokey the Bear, Clowns (Gordon and Esther Whitaker), High Rollers from Napoleon, tractors, antique and classic cars, couple in ballroom costume.



PADDYWAGON PATROL: Enough to drive even the most rakish fellow down the path of straight and narrow is this sight of the Waterloo Supercops paddywagon patrolling in the Waterloo Bicentennial parade. Relaxing on the roof is the judicious Bob Dawson robed and wigged for his duties, driving is John Klink, and keeping his eyes peeled for trouble is John Beeman in the back window.



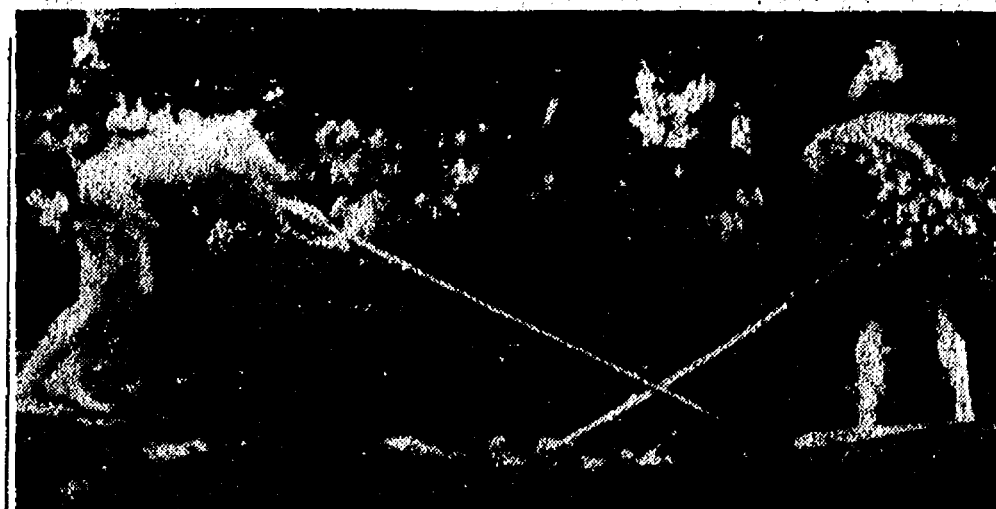
LOG-ROLLERS: Among the many sporting events held in the old mill pond at Waterloo to celebrate the bicentennial was an old-fashioned log rolling contest. Demonstrating his fancy footwork on the left is Carter Blocksma while the dapper dressed Reuben Lesser, Jr., on the right, keeps right on rolling straight into the cool, clear water.

Personal Notes

Mr. and Mrs. Duane L. Gentner their daughter Lisa, and son Christopher, of Hanover Park, Ill., were week-end guests of their parents, Mr. and Mrs. Floyd E. Gentner of 316 Jackson St. They attended the 25th class reunion of Duane's high school graduating class of Chelsea High, held Saturday night, July 10, at the Rod and Gun Club. Other guests at the Gentner home were Mr. and Mrs. Ronald F. Gentner and their daughter Tracy, her friend Shella, Elnora Wright, and Robert V. and Marie Abdon.

Michigan State University students last year (1974-75) could select from a total of 2,895 undergraduate courses and 1,622 graduate courses. During the year, 181 new courses were begun; 400 were changed, and 77 outmoded courses were dropped.

Telephone Your Club News To 475-1371.



INNERTUBE BATTLE: It all came down to push and shove in the innertube contest at Waterloo's Bicentennial on Saturday, July 10. The way these two kept toe-gripping their rafts, you would have thought "Jaws" was waiting in the water beneath them. On the left is Phil Klink with what looks like the longest pole in the county, while Reuben Lesser, Jr., on the right, wearing his bicentennial bathing suit, keeps managing to fend Klink off.



WELCOMING PARTY: These bicentennial guys and dolls were the welcoming party greeting visitors to Waterloo's Bicentennial celebration held July 9-11. Left to right are Floyd Reithmiller, Wilbur Beeman, Glenn Rentschler and Mrs. John Klink.



INTO THE DRINK! Wilbur Beeman suffers a dunking administered by the Keystone Kops as punishment for his outlawish deeds following Chelsea's caravan to Waterloo for the Waterloo Bicentennial celebration. Unfortunately, it looks like one over-enthusiastic law enforcer quells some of his fire with a little slip into the drink also.

GOP Congressional Candidates To Appear In Public Debate

Washtenaw County Republican Committee announced today a public debate between the Republican contenders for the 2nd Congressional District seat being created by Congressman Marvin Esch of Ann Arbor.

The debate will be held at 8 p.m. Thursday, July 15, at Holiday Inn East, Washtenaw at US-23 in Ann Arbor. Republican candidates for State and County offices will be available to answer questions. The public is invited.

AUNT HAZEL and "HENRIETTA" Ventriloquist and Gospel Magic

for
Transportation
Call:
475-1074



Unique!!
Fundamental!!
Evangelistic!!

"KIDS KRUSADE" JULY 19 thru 23

7:00 p.m. to 8:30 p.m.

First Assembly of God of Chelsea

EVERYONE INVITED!

RICHARD J. COURY, PASTOR

CHELSEA 20th ANNUAL

SIDEWALK DAYS

and ART FAIR

Bigger and Better Than Ever!

**FRIDAY and SATURDAY
AUGUST 13-14**

FRIDAY, 8:30 a.m. to 9 p.m. - SATURDAY, 8:30 a.m. to 5 p.m.

Your budget will get plenty of extra mileage at the low bargain prices you'll find on good seasonal merchandise of every kind. Many items have been specially purchased for this big annual bargain day event.



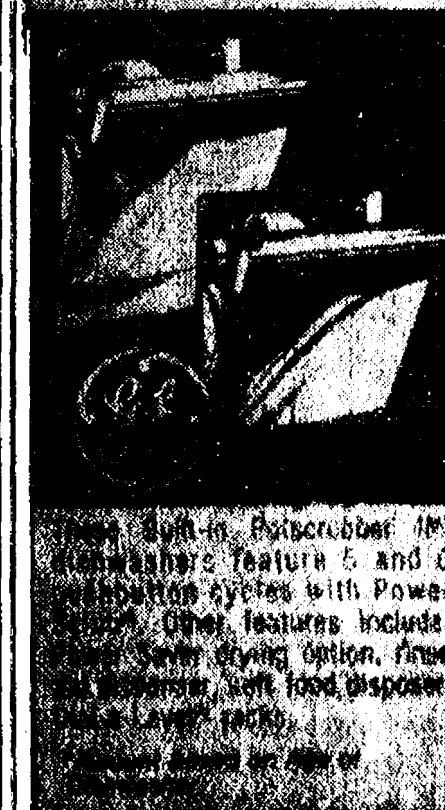
**ART FAIR
ENTRIES
DUE JULY 26**

Call Karen Johnson
for details
475-2678

The Veterans Administration today is providing more benefits and services to more veterans and dependents than at any time in its 45-year history.

Your GENERAL ELECTRIC
BUILT-IN DISHWASHER
may be worth more
than you think!

**\$30
to \$70
TRADE-IN
ALLOWANCE**
WHEN YOU BUY
A GENERAL ELECTRIC
MODEL GSD 1050 OR
GSD 950 DISHWASHER

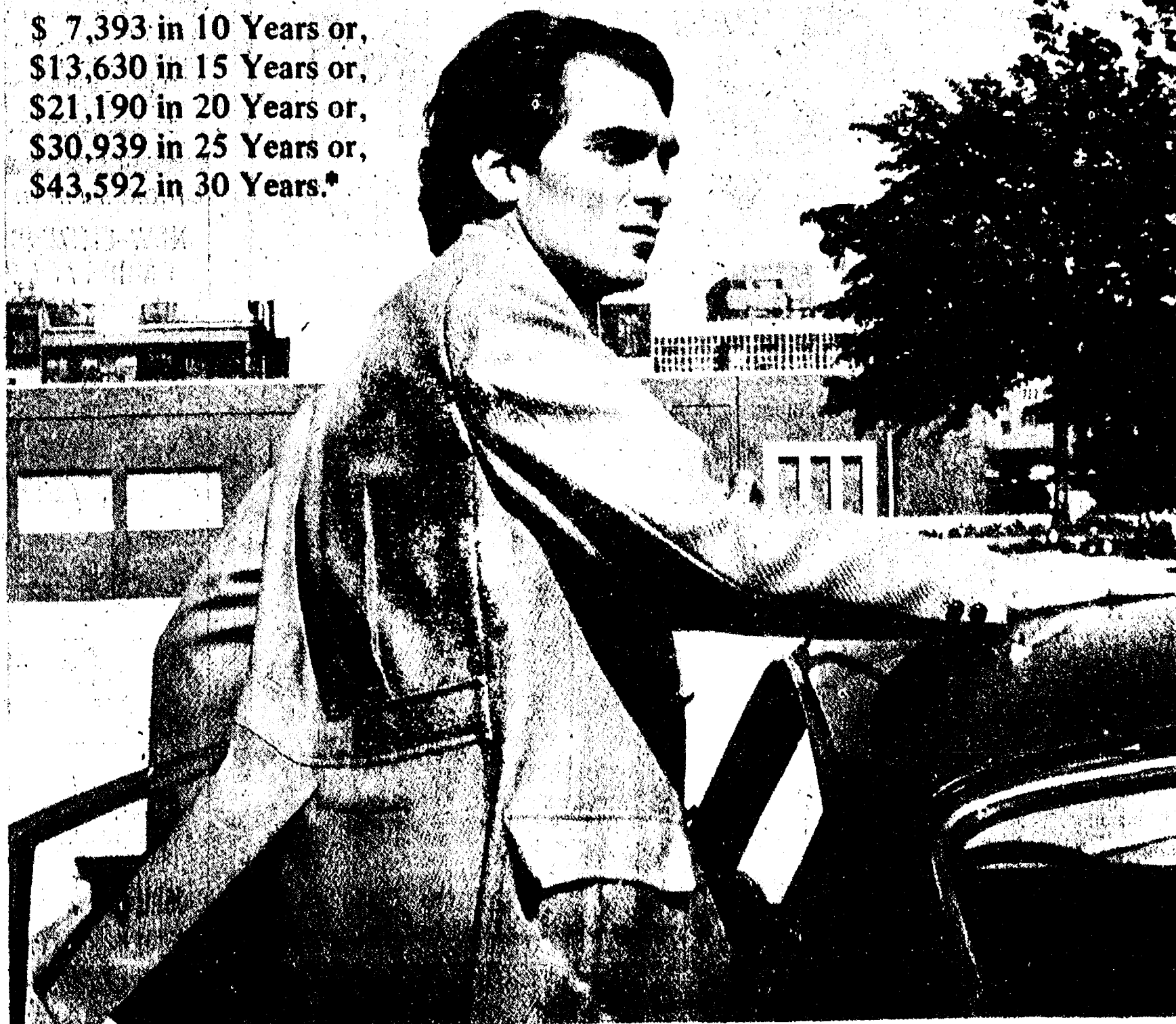


HEYDLAUFF'S
113 N. Main St., Chelsea
Ph. 475-1221

A SAVINGS OFFER YOU CAN'T REFUSE...

Give us \$50 a Month... We'll give you...

\$ 7,393 in 10 Years or,
\$13,630 in 15 Years or,
\$21,190 in 20 Years or,
\$30,939 in 25 Years or,
\$43,592 in 30 Years.*



And we have hundreds of other savings plans that are just as attractive and perhaps even better for you. You choose a monthly deposit to savings that fits your budget... \$10, \$25, \$75, \$100 or whatever... these deposits plus the magic of compounding will enable you to double and quadruple your savings over the years. No one plan is applicable to everyone. You're ambitious. You want to have a substantial sum of money earning additional income for you when you are older. Good for you. We have the plans and the means to help you do this. Good for us.

How-to-do-it information is available at all of our 11 offices along with our Perpetual Money Wheels that let you chart your own financial programs. The important thing is to start... every day your money can be growing. So see an Ann Arbor Federal Savings officer today and put your own program into action.

*Based on current passbook rate of 5% per annum, effective annual rate of 5.35% with quarterly compounding.

ANN ARBOR FEDERAL SAVINGS
11 OFFICES TO SERVE YOU IN: ANN ARBOR, CHELSEA, DEXTER, MANCHESTER, YPSILANTI, BRIGHTON, SALINE

Member FDIC



Polly's

HONEST GOLD DOLLAR VALUES

Gold Dollar Sale

Polly's MASTER MARKETS

1101 M-52

CHELSEA, MICH.

(Corner M-52 and Old U.S. 12)

Supplement to: Ann Arbor News, Chelsea Standard

polly's on n. west ave. & spring arbor rd.
OPEN 24 HOURS
(EXCEPT SATURDAY MIDNITE 'TIL SUNDAY 8 a.m.)
all other polly's open
DAILY 8 a.m. 'TIL 10 p.m.
SUNDAY 9 a.m. 'TIL 9 p.m.

HEINZ
CIDER VINEGAR
\$1.19
gallon with coupon

Sealtest
2% FAT
VITALURE
MILK
\$1.19
Gallon WITH COUPON

SAVE UP TO \$9.23
WITH ALL POLLY'S BONUS COUPONS & IN-STORE COUPONS
VALUABLE COUPON
SAVE 30¢ HEINZ CIDER VINEGAR
gallon **\$1.19**
LIMIT 1 PER COUPON PER FAMILY
GOOD THRU 7/17/76

BALL OR KERR
CANNING JARS

Dozen
Quart
Jars

\$2.19
WITH COUPON

VALUABLE COUPON
SAVE UP TO 76¢ SEALTEST 2% VITALURE MILK
gallon **\$1.19**
LIMIT 2 PER COUPON PER FAMILY
GOOD THRU 7/17/76

VALUABLE COUPON
SAVE UP TO 60¢ BALL OR KERR CANNING JARS
Dozen Quart **\$2.19**
LIMIT 2 PER COUPON PER FAMILY
GOOD THRU 7/17/76

VALUABLE COUPON
SAVE UP TO 24¢ POLLY'S GRADE A MEDIUM EGGS
Dozen **59¢**
LIMIT 2 PER COUPON PER FAMILY
GOOD THRU 7/17/76

VALUABLE COUPON
SAVE 40¢ NO-RETURN 8-PAK COKE
16-oz. **99¢**
LIMIT 1 PER COUPON PER FAMILY
GOOD THRU 7/17/76

POLLY'S GRADE A
MEDIUM EGGS
59¢
Dozen WITH COUPON

NO-RETURN
8-PAK COKE
99¢
16-OZ. BOTTLES WITH COUPON

STOKELY-VAN CAMP.

Polly's
MASTER MARKET

OPEN 24 HOURS
EXCEPT SATURDAY MIDNITE
'TIL SUNDAY 8 a.m.
all other Polly's open
DAILY...8 a.m. TIL 10 p.m.
SUNDAY...9 a.m. TIL 9 p.m.

SAVE UP TO \$9.23
WITH ALL POLLY'S BONUS & IN-STORE COUPONS

GOLD DOLLAR SALE

Important Savings for Smart Shoppers



from **Stokely**

- CUT GREEN BEANS
- FRENCH GREEN BEANS
- SHELLIE BEANS
- CUT WAX BEANS
- DARK RED KIDNEY BEANS

- WHOLE KERNEL CORN
- CREAM STYLE CORN
- PEAS & CARROTS
- SLICED CARROTS
- DICED BEETS
- BAVARIAN KRAUT

4 Mix or Match
16-OZ.
CANS **\$1**

GREEN GIANT 12-OZ.
NIBLET CORN
GREEN GIANT 17-OZ.
CREAM CORN
GREEN GIANT 17-OZ.
SWEET PEAS
GREEN GIANT 16-OZ.
FRENCH BEANS

4 CANS FOR **\$1**

SAVE 28¢ WITH IN-STORE COUPON	BETTY CROCKER HAMBURGER HELPER ... 6/9-OZ. BOXES	49¢
SAVE 38¢ WITH IN-STORE COUPON	STAYFREE MAXI-PADS ... 30-CT. BOX	\$1.39
SAVE 40¢ WITH IN-STORE COUPON	GUINNESS WORLD RECORD DIXIE CUPS ... 80-CT.	89¢
SAVE 20¢ WITH IN-STORE COUPON	FOR CLEAN WINDOWS GLASS PLUS ... 22-OZ.	69¢
SAVE 18¢ WITH IN-STORE COUPON	NON DAIRY CREAMER COFFEE MATE ... 11-OZ.	69¢
SAVE 50¢ WITH IN-STORE COUPON	ALL MEAT FRISKIES BUFFET ... 6 6-OZ. CANS	\$1
SAVE 40¢ WITH IN-STORE COUPON	FLUORIDE AIM TOOTHPASTE ... 4.5-OZ. TUBE	69¢

FEATURE ITEMS!!

8¢ OFF LABEL DOWNY SOFTENER ... 33-oz.	84¢
THANK YOU PRUNE PLUMS ... 29-oz.	39¢
SCOT KITCHEN MACARONI & CHEESE ... 5 7-OZ. PKGS.	\$1
JIFFY CAKE MIXES ... 5 9-OZ. PKGS.	\$1
ASSORTED BRACHS JELLIES ... 2 2-LB. BAGS	\$1
HERSHEY CHOCOLATE SYRUP ... 16-OZ.	39¢
FANNINGS BREAD & BUTTER PICKLES ... 14-OZ.	49¢
KRAFT JET-PUFF MARSHAMLLAWS ... 16-OZ.	49¢
CONTADINA TOMATO SAUCE ... 3 15-OZ. CANS	\$1
FRESHLIKE VEG-ALL ... 4 15-OZ. CANS	\$1

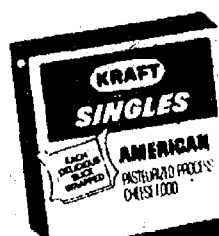
DAIRY



GOLD DOLLAR SPECIALS

Polly's MASTER MARKETS

1101 M-52
CHELSEA, MICH.
(Corner M-52 and Old U.S. 12)



KRAFT
AMERICAN SINGLES

16-OZ.

\$1.39

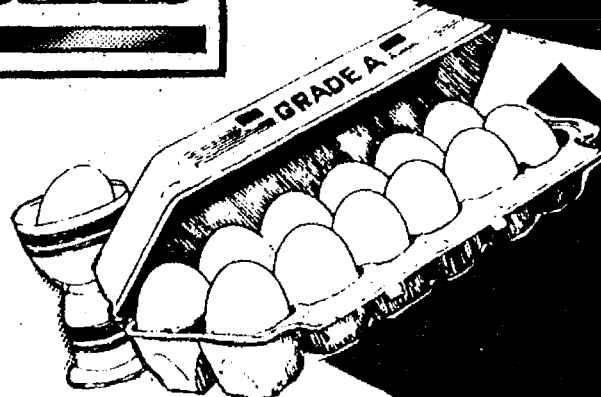
SAVE 36¢
WITH IN-STORE COUPON

SEALTEST

SOUR CREAM

16-OZ.

59¢



POLLY'S GRADE A
MEDIUM EGGS

Dozen

59¢

WITH COUPON



PHILADELPHIA
CREAM CHEESE

8-OZ.

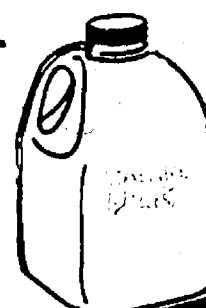
49¢

SAVE 14¢
WITH IN-STORE COUPON

NU SPRED
VEGETABLE OIL TABLE SPREAD

2-LB.
TUB

79¢



SEALTEST 2%
VITALURE MILK

Gallon

\$1.19

SAVE 38¢ WITH COUPON



BAN CREAM

1 oz - 98¢ Value

84¢



40
Tablets

89¢

\$1.35
Value



ARRID EXTRA DRY & LIGHT POWDER

5 oz.
Aero

79¢

\$1.41
Value



225
Tablets

\$3.19

\$4.25
Value



30¢ OFF

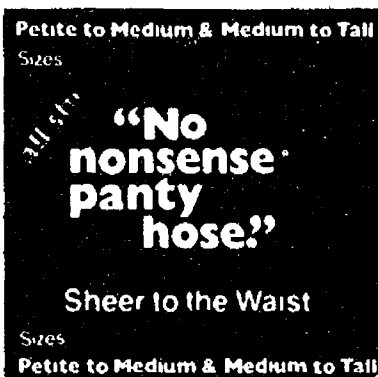
8 OZ

Soft & Dri

NON-STING
ANTI-PERSPIRANT

- SCENTED
- UNSCENTED
- BABY POWDER
- SUPER DRY

\$1.99 **\$1.39**
Value



NO NONSENSE

Sheer to the Waist
Panty Hose

All
Shades

89¢

\$1.29
Value

SCHICK SUPER II

Twin Blade Cartridges

Cash Refund Offer

9 Cartridges - \$2.59 Value

\$1.59

ROSE MILK

SKIN CREAM

8 oz - \$1.79 Value

99¢



**EVEREADY
HEAVY DUTY BATTERIES**

Size
C or D

79¢

\$1.00
Value



SAVE 30¢

12 oz.

RIGHT GUARD
ANTI-PERSPIRANT

ECONOMY
SIZE SAVINGS

\$2.89 Value

\$1.99

SPRING ARBOR RD.

SNACK BAR SPECIALS

MONDAY...Cold Plate - \$1.09

TUESDAY...Veal Cutlet Sandwich & French Fries - 99¢

WEDNESDAY...Meat Loaf, Mashed Potatoes & Cole Slaw - \$1.29

THURSDAY...Polly Broasted Chicken, Mashed Potatoes & Cole Slaw - \$1.29

FRIDAY...Fish & Chips with Cole Slaw - 99¢

SATURDAY...Grilled Cheese Sandwich, French Fries & Cole Slaw - 99¢

WEEKLY SPECIAL!!

MALTEDS

EA.

39¢

OLD
DOLLAR
VALUES

JUMBO SPANISH
ONIONS
15¢
LB.

Jumbo CALIFORNIA
LEMONS
3 for 39¢


TROPICAL TREAT
MANGO'S
10-Size 49¢
EA.

U.S. NO. 1
IDAHO
POTATOES
99¢
16 LB. BAG
SAVE \$1.00 WITH IN-STORE COUPON

SWEET & JUICY
CANTALOUPE
27-Size 69¢
EA.

Fresh Fruit and Produce

Mix or Match
CELLO RED
RADISHES
or
GREEN
ONIONS
3 for 39¢

 **Polly's** MASTER
MARKETS
1101 M-52
CHELSEA, MICH.
(Corner M-52 and Old U.S. 12)

SNO-WHITE
MUSHROOMS
99¢



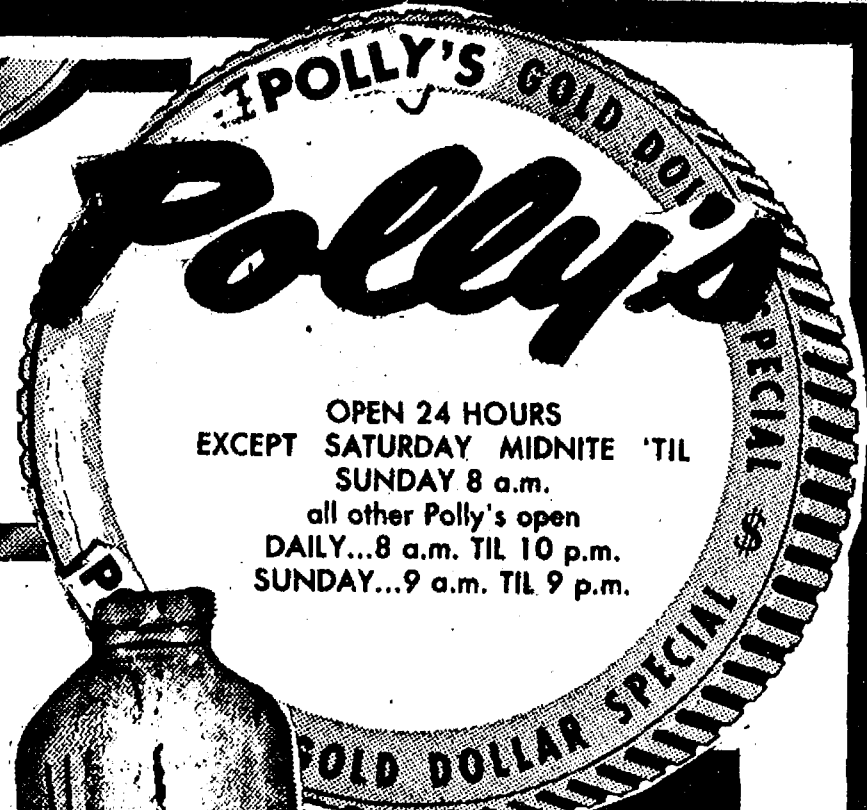
PERSONAL SIZE
IVORY
SOAP

8

BARS
FOR

69¢

SAVE 35¢ WITH IN-STORE COUPON



OPEN 24 HOURS
EXCEPT SATURDAY MIDNITE 'TIL
SUNDAY 8 a.m.
all other Polly's open
DAILY...8 a.m. TIL 10 p.m.
SUNDAY...9 a.m. TIL 9 p.m.



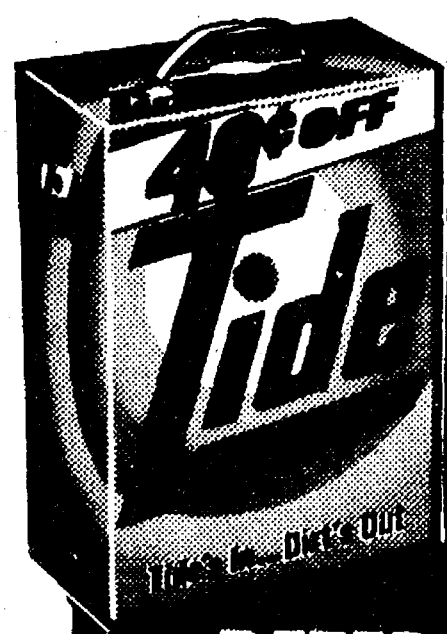
10¢ OFF LABEL

IVORY
LIQUID

22-OZ.

69¢

SAVE 10¢ WITH IN-STORE COUPON



40¢ OFF LABEL

TIDE
DETERGENT

171-OZ.
BOX

\$3.99

SAVE 50¢ WITH IN-STORE COUPON



DONALD DUCK

**ORANGE
JUICE**
from florida

64-OZ.

79¢

SAVE 10¢ WITH IN-STORE COUPON

EVERYDAY LOW PRICES!!

STRAWBERRY JAM 32-oz. **\$1.39**
BREAD & BUTTER PICKLE 14-oz. **49¢**
CREAMY GARLIC 16-oz. **79¢**
BARBECUE SAUCE 18-oz. **59¢**
BARBECUE SAUCE 28-oz. **88¢**
BARBECUE SAUCE 42-oz. **\$1.19**
GRAPE JELLY 48-oz. **\$1.29**
GENUINE DILLS 32-oz. **69¢**
DISH DETERGENT 22-oz. **44¢**
SNO-BOL 28-oz. **66¢**
BATHROOM TISSUE 8-roll pack **\$1.19**
CHOCOLATE CHIPS 12-oz. **69¢**
POTATO CHIPS 9-oz. **88¢**

AMERICAN SINGLES 16-oz. **\$1.39**
SLICED AMERICAN 12-oz. **99¢**
PEARS 16-oz. **41¢**
CHOPPED SPINACH 16-oz. **27¢**
CANE SUGAR 5-lb. **\$1.15**
CANE SUGAR 10-lb. **\$2.29**
BET SUGAR 5-lb. **\$1.09**
BET SUGAR 10-lb. **\$2.15**
CAKE MIXES 19-oz. **57¢**
HYDROX COOKIES 19-oz. **79¢**
FLOUR 10-lb. **\$1.65**
FLOUR 5-lb. **83¢**
FLOUR 10-lb. **\$1.65**

CREAM CHEESE 8-oz. **55¢**
FRUIT COCKTAIL 16-oz. **41¢**
ELBERTA PEACHES 16-oz. **41¢**
SHORTENING 3-lb. **\$1.38**
MIRACLE WHIP 32-oz. **85¢**
BEEF TAMALES 13-oz. **49¢**
GROUND BEEF 14-oz. **49¢**
VLASIC RELISHES 10-oz. **37¢**
DEVILED HAM 2 4-oz. for **89¢**
CHICKEN SPREAD 2 4-oz. for **89¢**
ROAST BEEF 2 4-oz. for **89¢**
SANDWICH BAGS 30-ct. **25¢**
PRUNE JUICE 40-oz. **59¢**

TON O' PORK



POLLY PRIDE
Whole
PORK LOIN
\$1.29
LB.

Sliced free

HYGRADE
CHUNK BOLOGNA ... LB. **79¢**
HYGRADE
CHUNK SALAMI ... LB. **89¢**
HYGRADE CHUNK
BRAUN SWEIGER ... LB. **49¢**



CHIEF COOK

BEEF



POLLY PRIDE QUALITY
CHUCK STEAK LB. **88¢**
POLLY PRIDE QUALITY
RIB STEAK LB. **\$1.48**
POLLY PRIDE ARM-CUT
SWISS STEAK LB. **\$1.28**
POLLY PRIDE QUALITY BONELESS
BEEF STEW LB. **\$1.38**
POLLY PRIDE BONELESS
CHUCK STEAK LB. **\$1.09**
POLLY PRIDE "KOSHER STYLE"
BEEF SHORT RIBS LB. **78¢**
POLLY PRIDE BONELESS
ENGLISH ROAST ... LB. **\$1.38**

POLLY PRIDE QUALITY
MIXED PORK CHOPS

\$1.09
LB.

POLLY PRIDE QUALITY
RIB PORK CHOPS
\$1.39
LB.

POLLY PRIDE QUALITY
LOIN PORK CHOPS
\$1.49
LB.

POLLY PRIDE QUALITY
RIB HALF PORK ROAST LB. **\$1.35**

POLLY PRIDE QUALITY
LOIN HALF PORK ROAST **\$1.45**

POLLY PRIDE
Boneless
CHUCK ROAST
99¢
LB.

POLLY PRIDE QUALITY
GROUND BEEF
3-LBS. or more **89¢** lb.



Polly's MASTER MARKETS
1101 M-52
CHELSEA, MICH.
(Corner M-52 and Old U.S. 12)

HOMEMADE
POTATO SALAD
OR
BAKED BEANS
LB. 69¢

BEEF or
REGULAR
FRANKS
LB. 79¢

MASTER MARKETS

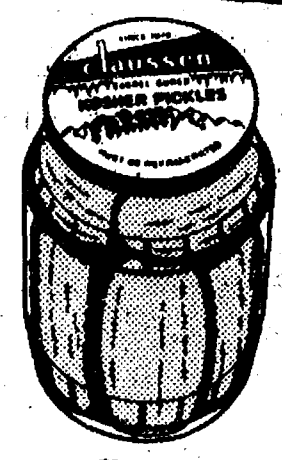
1101 M-52
CHELSEA, MICH.
(Corner M-52 and Old U.S. 12)

NEW YORK BRAND
CORN BEEF
LB. 89¢

POLLY PRIDE BONELESS
VEAL LEG
ROAST
\$1.89
LB.

FREEZER SPECIALS!

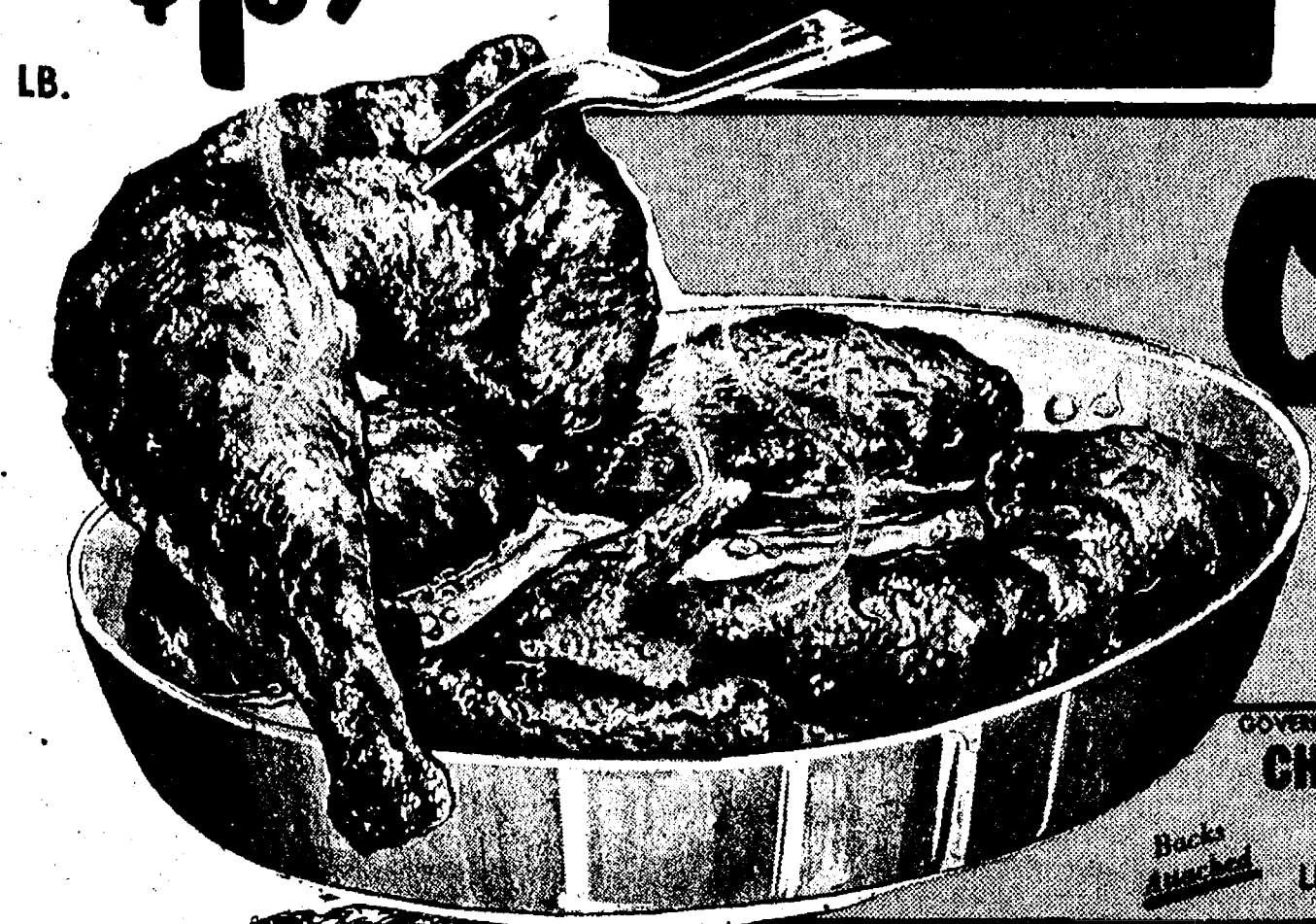
POLLY PRIDE WHOLE PORK LOIN	Sliced free!	LB.	\$1.29
POLLY PRIDE STRIP STEAKS	5 lbs or More	LB.	\$2.99
POLLY PRIDE WHOLE BEEF RIB	Cost After Cutting lb \$1.39	LB.	\$1.29
FARMER PEET SKINLESS FRANKS	5 LB BOX		\$3.99



CLAUSSEN PICKLES
"Barrel Cured Kosher"

32-oz. **99¢**

you'll love 'em
once you
try them



CHICKEN

GOVERNMENT INSPECTED
MIXED FRYER PARTS

49¢
LB.

- 3 forequarter w back
- 3 hindquarters w back
- 3 wings
- giblets

GOVERNMENT INSPECTED QUARTERED
CHICKEN LEGS

59¢
LB.

GOVERNMENT INSPECTED QUARTERED
CHICKEN BREAST

69¢
LB.



FARMER PEET
Boneless
BONANZA
HAM

\$1.69
LB.



ARMOUR STAR
CAN
PICNIC
\$4.49
3-LB. CAN

HICKORY SMOKED BONELESS		
HAM SLICE	LB.	\$1.89
HERRUD BEEF or REGULAR		
SMOKY-LINKS	10-OZ.	99¢
MILD COLBY CHUNK		
LONGHORN CHEESE	LB.	\$1.39
BOB EVANS		
PORK SAUSAGE	1-LB. ROLL	\$1.59

SCOT FARM FRESH FROZEN



BEEF PATTIES 4-LB. BOX	\$3.99	17¢ per serving
WITH IN-STORE COUPON		
QUARTER POUNDER		
4-LB. BOX	32¢ per serving	
VEAL STEAK		
4-LB. BOX	35¢ per serving	
SIRLOIN PATTIES		
5-LB. BOX	51¢ per serving	



NEW THICK SLICE!!
FARMER PEET
RANCH BACON
\$1.59
LB.



Polly's MASTER MARKETS
1101 M-52
CHELSEA, MICH.
(Corner M-52 and Old U.S. 12)



MINUTE MAID
LEMONDAE
2 16-OZ. CAN **\$1**
SAVE 38¢ WITH IN-STORE COUPON

- ORE-IDA **CHOPPED ONIONS** 4 12-OZ. **\$1**
- RICH'S **COFFEE RICH** 32-OZ. **49¢**
- FRESHLIKE **CUT GREEN BEANS** 20-OZ. **49¢**
- FRESHLIKE **MIXED VEGETABLES** 24-OZ. **49¢**

- SALUTO DEEP DISH **SAUSAGE PIZZA** 26-OZ. **\$1.99**
- ORE-IDA **SHOESTRING POTATOES** 20-OZ. **49¢**
- GORTONS BREADED **FISH PORTIONS** 2-LB. **\$1.45**
- BORDEN **ICE MILK BAR STIX** 12-PK **79¢**

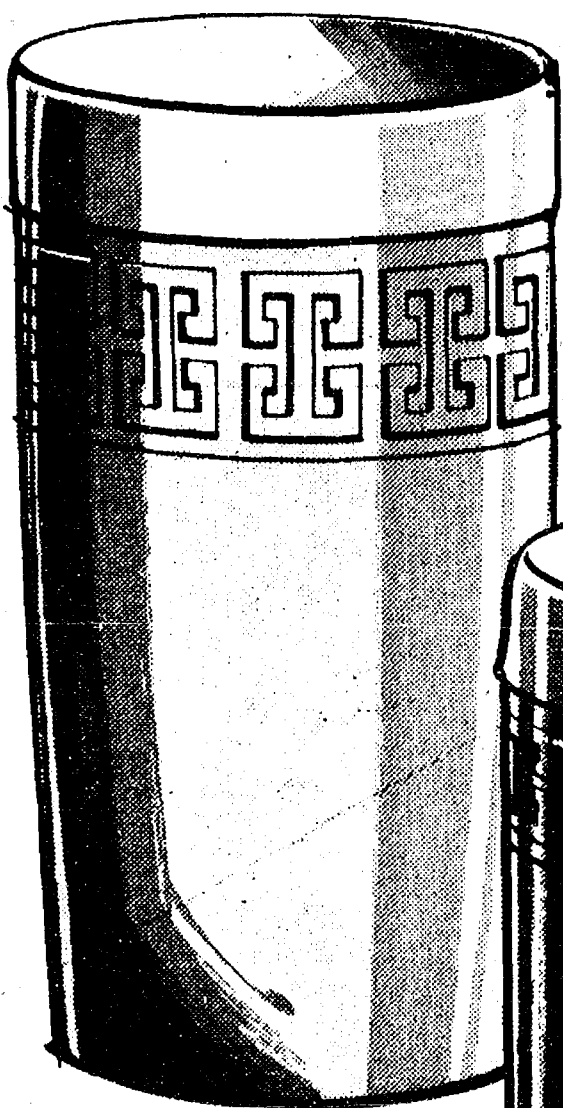


BORDEN
SHERBET
OR
LITE-LINE ICE MILK
69¢ 1/2-Gallon

The Newest Creation in Food in the past 200 years is "Frozen Food". Look for our "FROZEN BICENTENNIAL SELL-A-BRATION" in our next weeks ad!

THERM-O-WARE

PERFECT FOR ANY OCCASION ALL YEAR LONG.



THIS WEEK
14-oz BOWL
35¢ OR 3 FOR \$1
with every \$3.00 purchase
start your set today!

Keep this handy "Piece-A-Week" Schedule

Week	"Piece-A-Week"	Price with every \$3 purchase
1	9 oz. Cup	35¢ or 3 for \$1
2	12 oz. Tumbler	35¢ or 3 for \$1
3	14 oz. Bowl	35¢ or 3 for \$1

This schedule will be repeated three more times.



COMPLETE YOUR SET!
companion pieces available every week.